

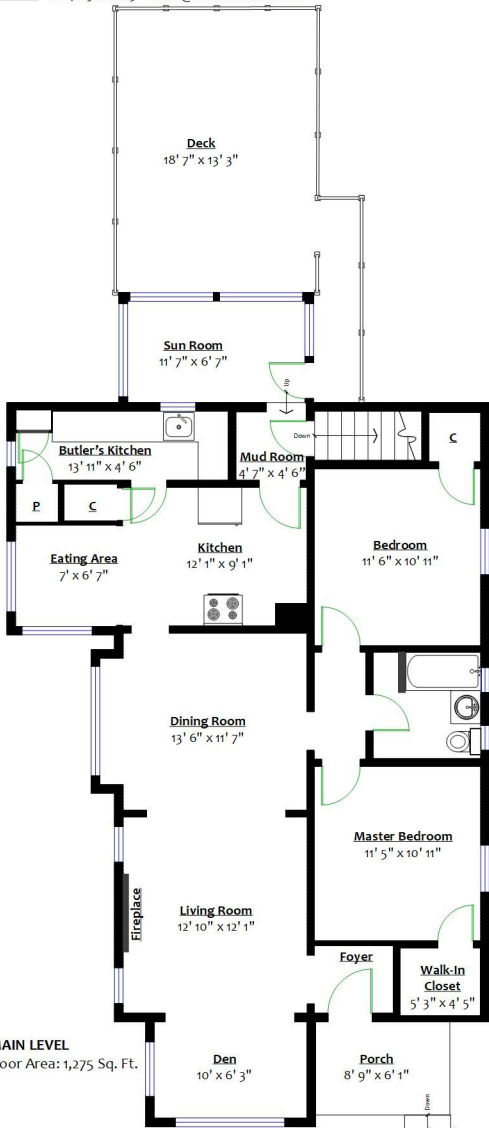


Todd Conner

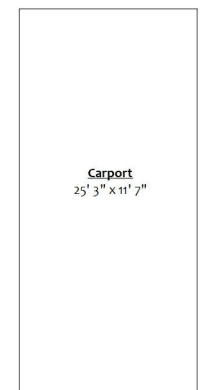


604.290.2269 info@toddconner.com

124 Westin Street New Westminster, B.C.



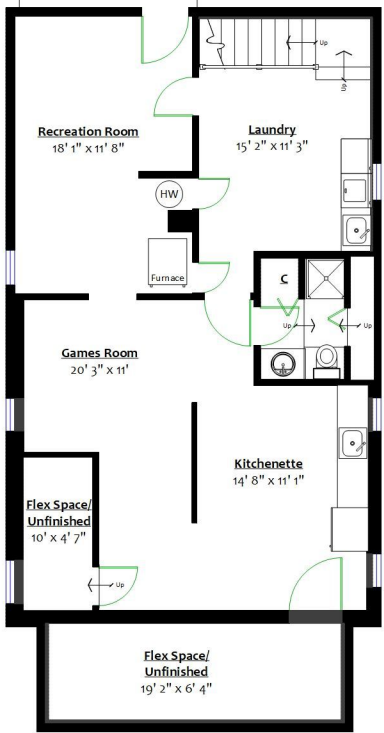
MAIN LEVEL
Floor Area: 1,275 Sq. Ft.



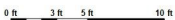
Totals**

Main Level:	1,275 sq. ft.
Lower Level:	921 sq. ft.
Total:	2,196 sq. ft.
Den:	62 sq. ft.
Flex Space:	146 sq. ft.
Grand Total:	2,404 sq. ft.

Porch:	53 sq. ft.
Deck:	285 sq. ft.
Carport:	293 sq. ft.
Total:	631 sq. ft.



LOWER LEVEL
Floor Area: 1,129 Sq. Ft.



** Approx. based on interior measurements to exterior walls
** Total square footage not taken from original blueprints