

**1407 Seventh Avenue,
New Westminster, B.C.**

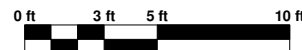
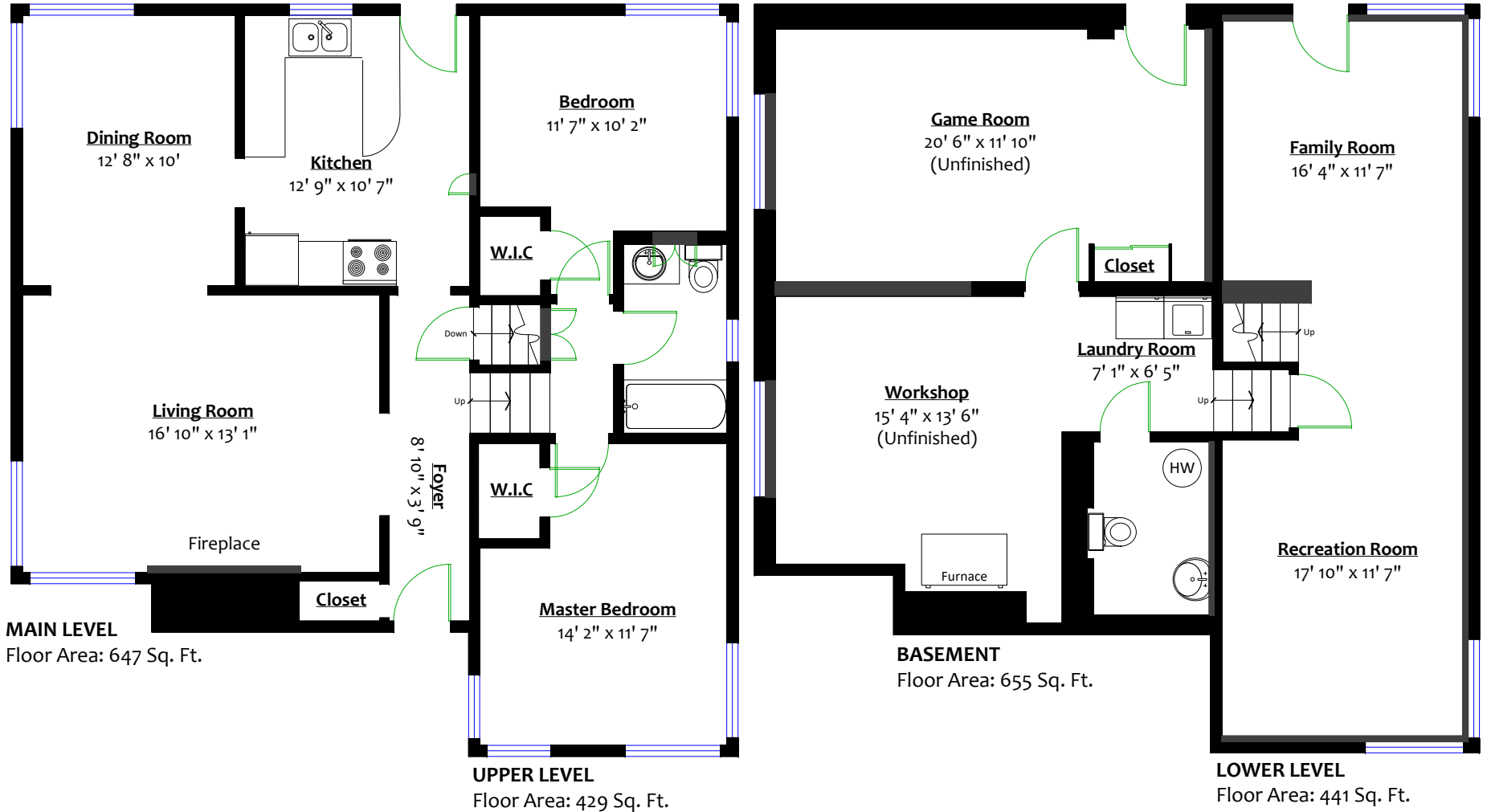
Totals**	Main Level:	647 sq. ft.
	Upper Level:	429 sq. ft.
	Basement:	655 sq. ft.
	Lower Level:	441 sq. ft.
	Total:	2,172 sq. ft.



Todd Conner



604.290.2269 info@toddconner.com



** Approx. based on interior measurements to exterior walls
** Total square footage not taken from original blueprints