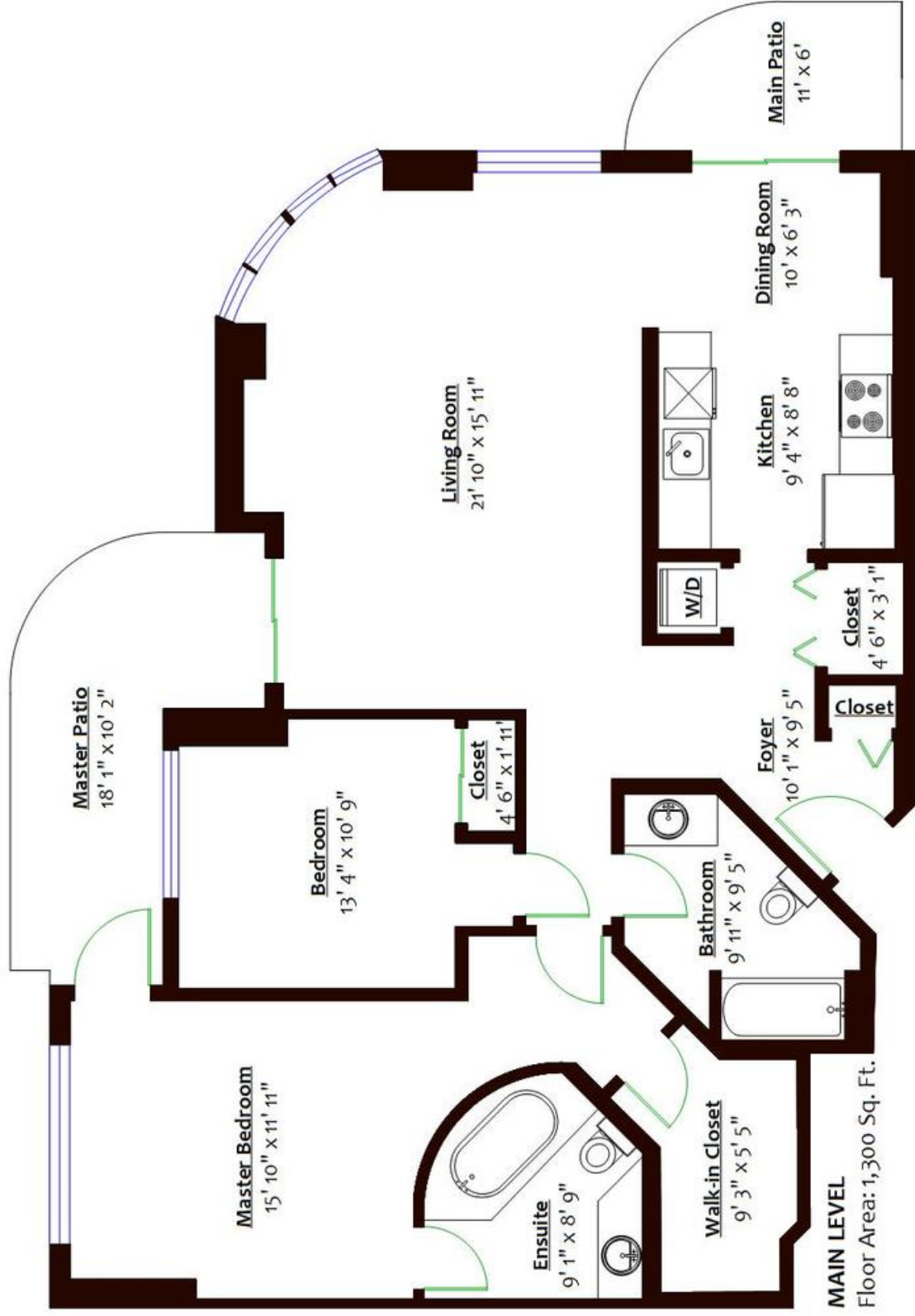


#301 – 612 Fifth Avenue, New Westminster, B.C.

Totals**

Main Level: 1,300 sq. ft. Main Patio: 48 sq. ft.
 Master Patio: 125 sq. ft.
 Total: 173 sq. ft.



MAIN LEVEL
 Floor Area: 1,300 Sq. Ft.



** Approx. based on interior measurements to exterior walls
 ** Total square footage not taken from original blueprints