

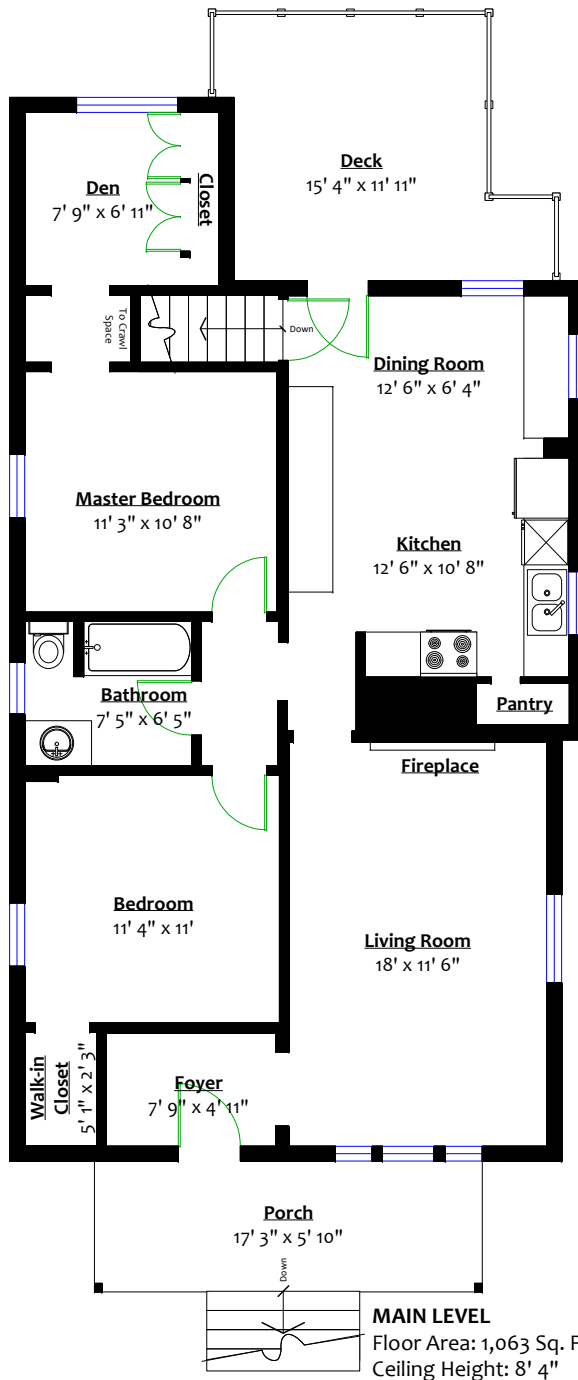


**818 Henley Street,  
New Westminster, B.C.**

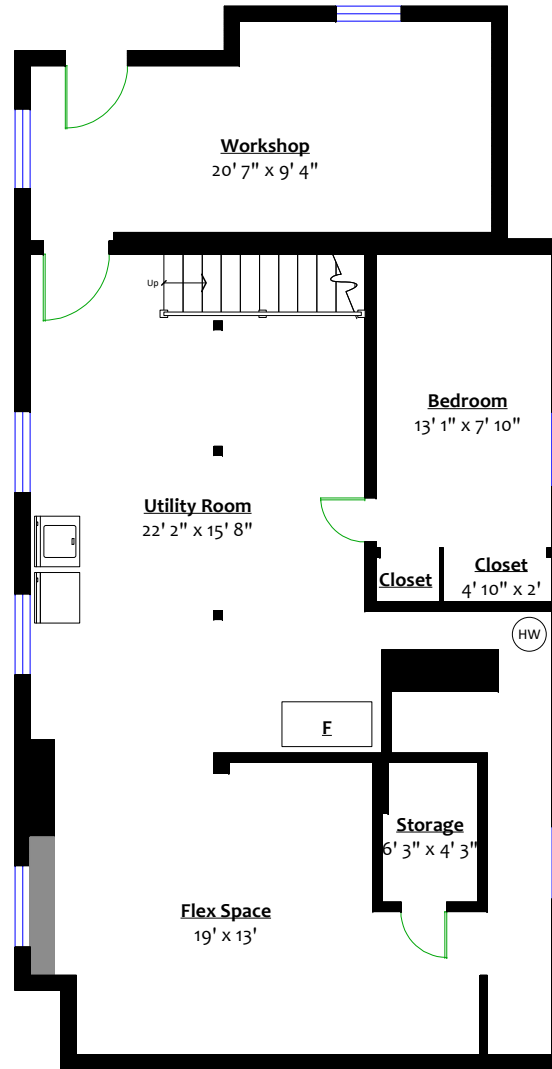
**Totals\*\***

Main Level:	1,063 sq. ft.
Total (fin.):	1,063 sq. ft.
Lower Level (UF):	1,108 sq. ft.
Grand Total:	2,171 sq. ft.

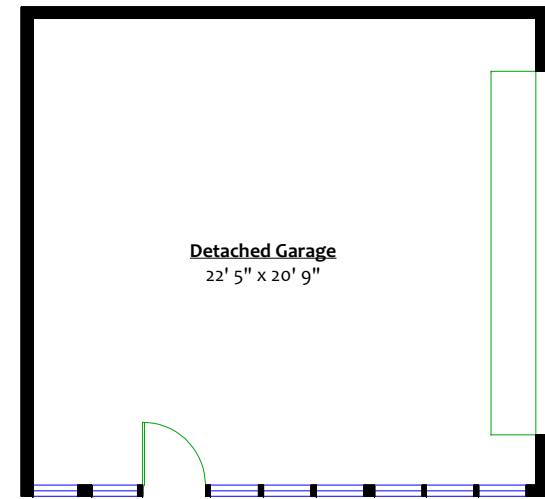
Detached Garage:	509 sq. ft.
Deck:	150 sq. ft.
Porch:	100 sq. ft.
Total:	759 sq. ft.



**MAIN LEVEL**  
Floor Area: 1,063 Sq. Ft.  
Ceiling Height: 8' 4"



**LOWER LEVEL (UNFINISHED)**  
Floor Area: 1,108 Sq. Ft.  
Ceiling Height: 6' 11"



**DETACHED GARAGE**  
Floor Area: 509 Sq. Ft.  
Ceiling Height: 8' 3"

