

# 532 Amess Street, New Westminster, B.C.

## Totals\*\*

Main Level: 1,276 sq. ft.

Lower Level: 1,256 sq. ft.

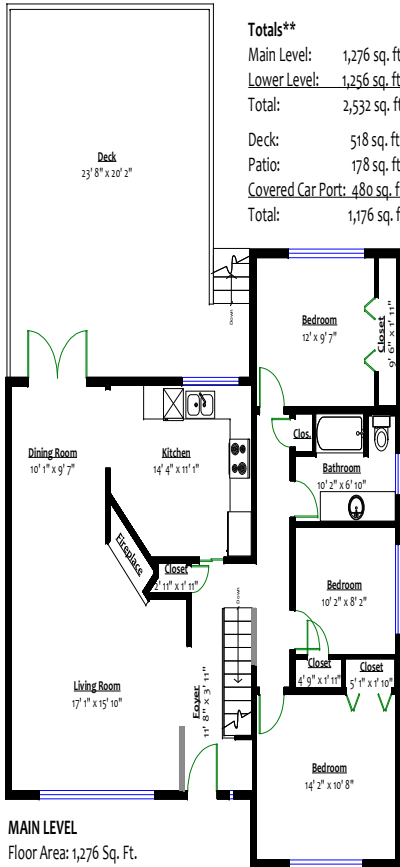
Total: 2,532 sq. ft.

Deck: 518 sq. ft.

Patio: 178 sq. ft.

Covered Car Port: 480 sq. ft.

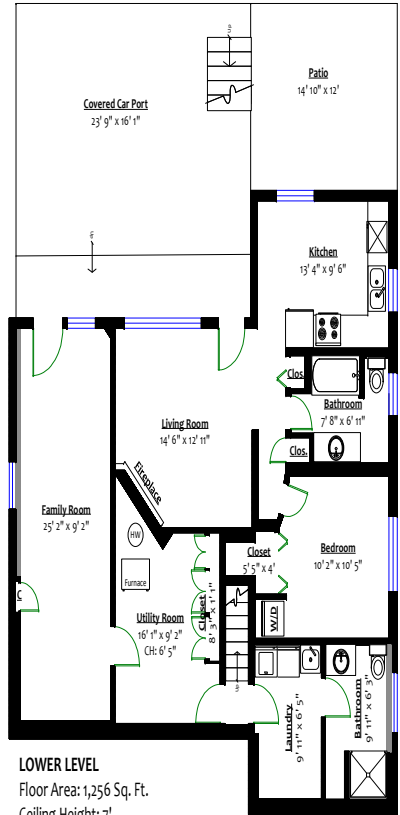
Total: 1,176 sq. ft.



### MAIN LEVEL

Floor Area: 1,276 Sq. Ft.

Ceiling Height: 8'



### LOWER LEVEL

Floor Area: 1,256 Sq. Ft.

Ceiling Height: 7'

