

1609 Dublin Street, New Westminster, B.C.

Totals**

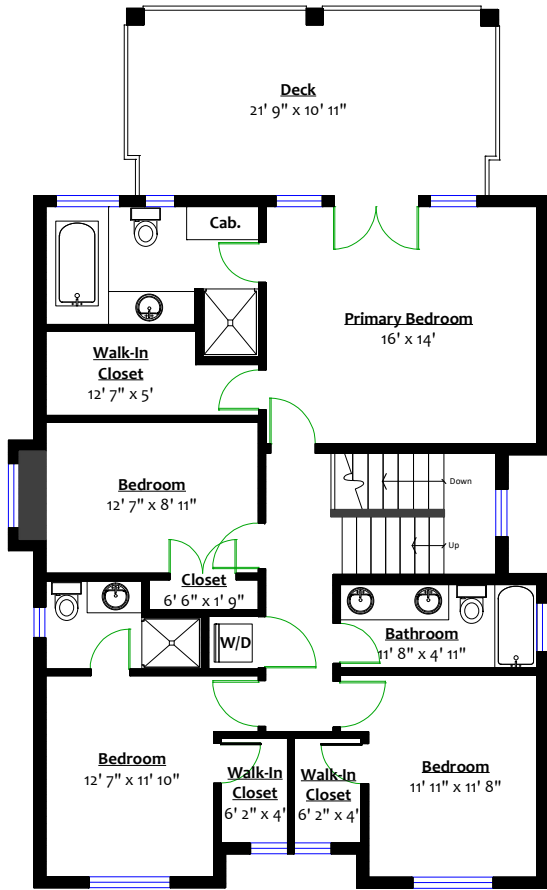
Main Level:	1,500 sq. ft.	Patio:	219 sq. ft.
Upper Level:	1,205 sq. ft.	Deck:	232 sq. ft.
Lower Level:	1,446 sq. ft.	Lower Entry:	68 sq. ft.
Total:	4,151 sq. ft.	D. Garage:	672 sq. ft.
		Total:	1,191 sq. ft.



Todd Conner

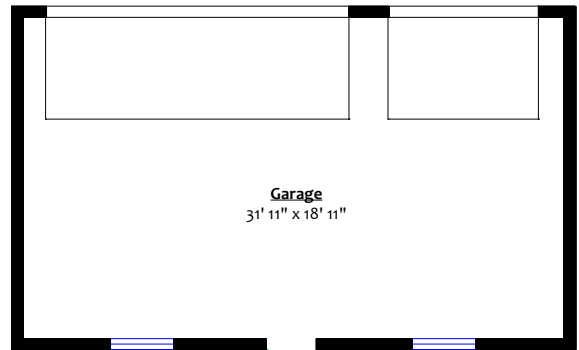
RE/MAX
All Points Realty

604.290.2269 info@toddconner.com

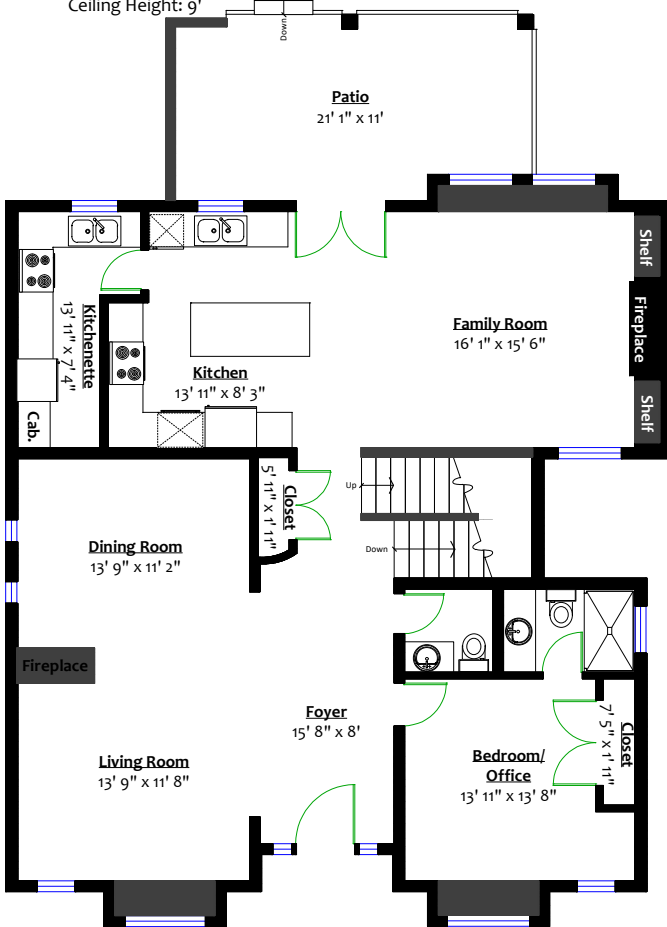


UPPER LEVEL

Floor Area: 1,205 Sq. Ft.
Ceiling Height: 9'

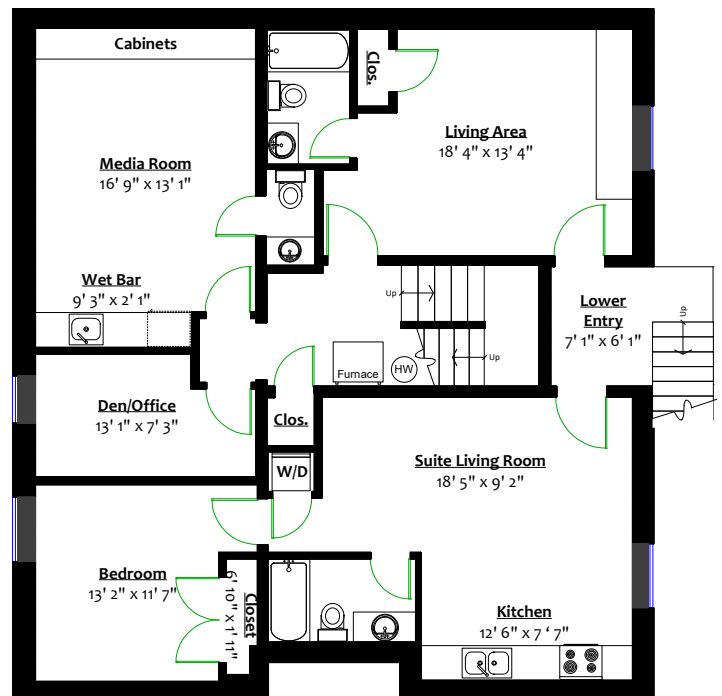


DETACHED GARAGE
Floor Area: 672 Sq. Ft.



MAIN LEVEL

Floor Area: 1,500 Sq. Ft.
Ceiling Height: 9' 11"



LOWER LEVEL

Floor Area: 1,446 Sq. Ft.
Ceiling Height: 7' 11"

