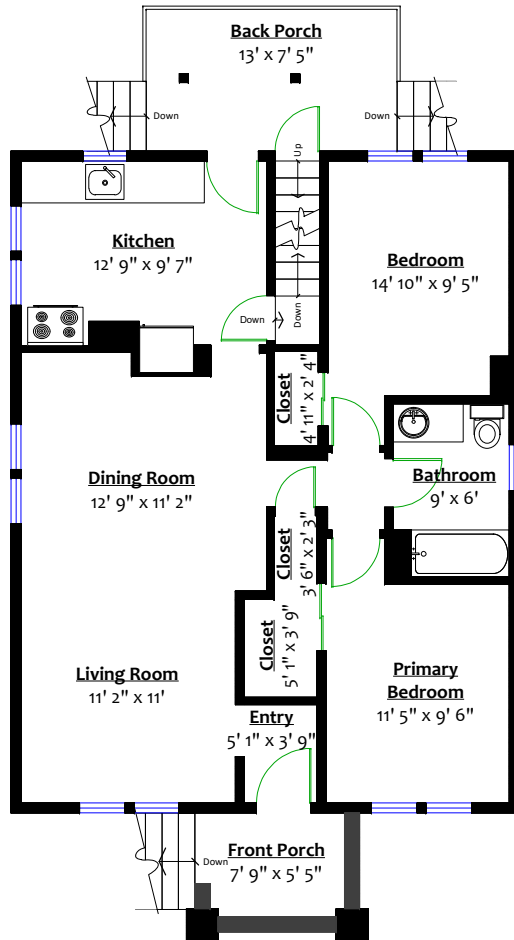
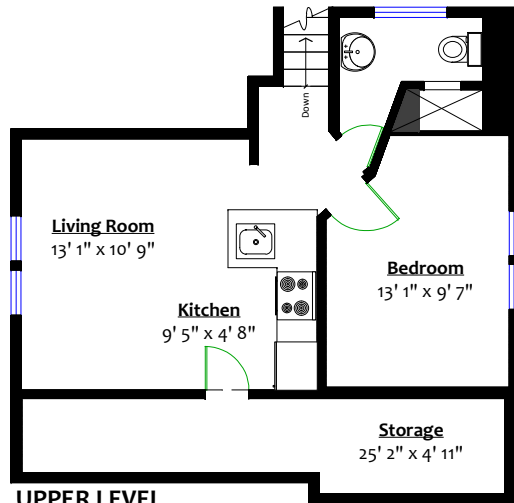


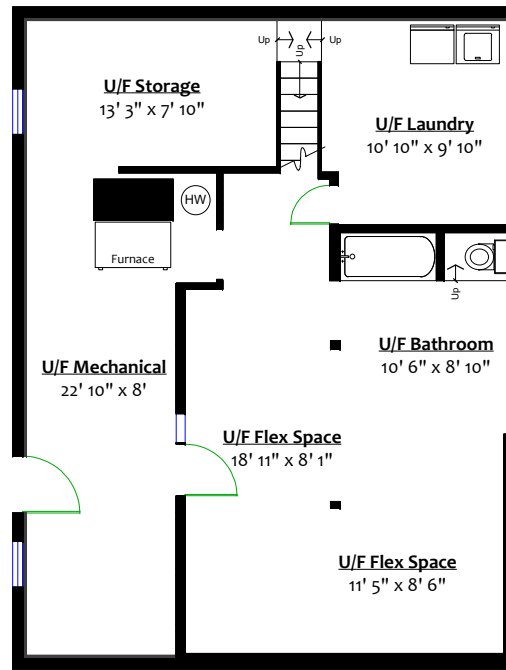
# 407 Kelly Street, New Westminster, B.C.



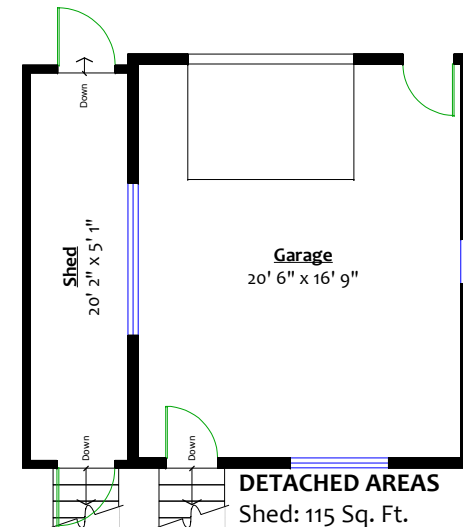
## Totals\*\*

Main Level: 909 sq. ft.  
 Upper Level: 582 sq. ft.  
 Total: 1,491 sq. ft.  
 Basement: 909 sq. ft.  
 Grand Total: 2,400 sq. ft.

Front Porch: 40 sq. ft.  
 Back Porch: 96 sq. ft.  
 D. Garage: 383 sq. ft.  
 D. Shed: 115 sq. ft.  
 Total: 634 sq. ft.



**Todd Conner**  
 604.290.2269 **RE/MAX**  
 All Points Realty  
 info@toddconner.com



\*\* While all reasonable attempts have been made to ensure accuracy and the square footage and room dimensions are believed to be correct to ANSI Standards, due to the possibility of human error the information cannot be guaranteed. E&O Insured for \$1,000,000