

# 1415 Nanaimo Street, New Westminster, B.C.

## Totals\*\*

Main Level:	1,828 sq. ft.	Porch:	240 sq. ft.
Upper Level:	1,485 sq. ft.	Patio:	300 sq. ft.
Lower Level:	1,809 sq. ft.	Deck:	71 sq. ft.
Total:	5,122 sq. ft.	Suite Entry:	96 sq. ft.
		Lower Entry:	60 sq. ft.
		D. Garage:	755 sq. ft.
		Total:	1,522 sq. ft.



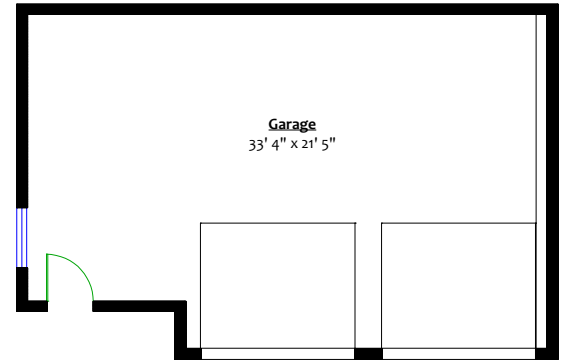
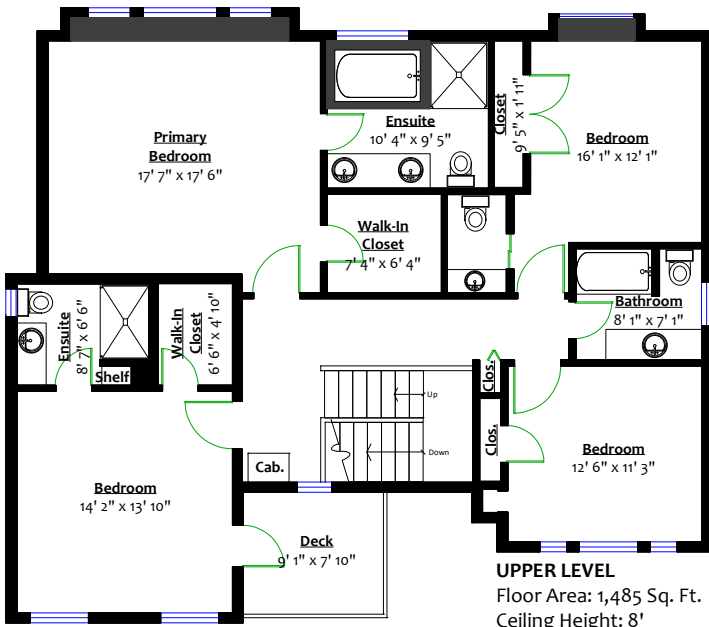
**Todd Conner**

604.290.2269

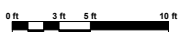
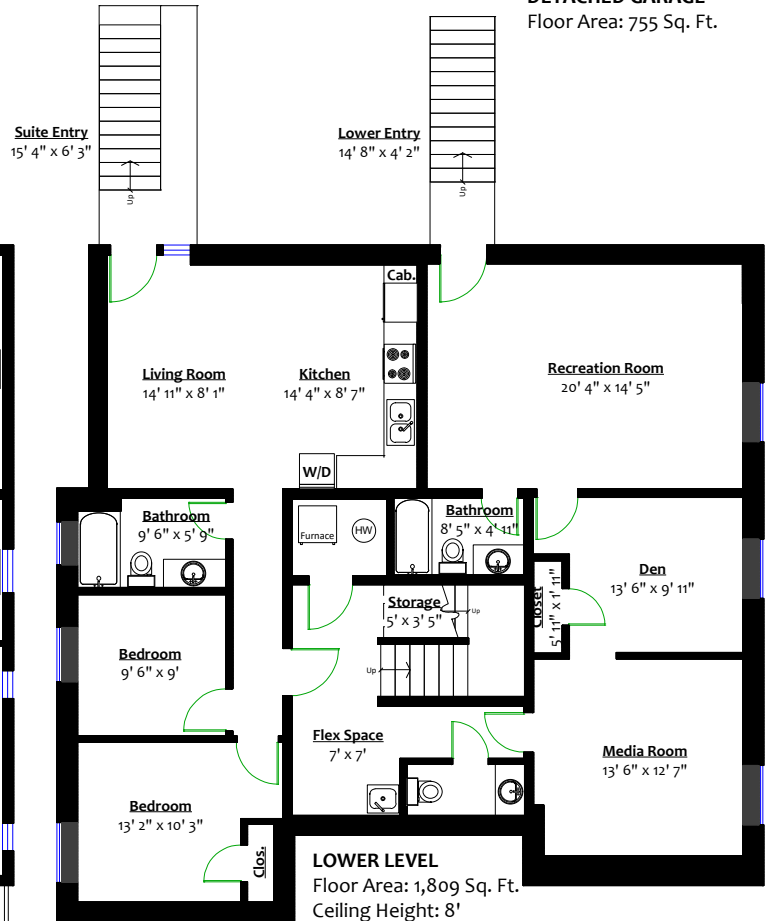
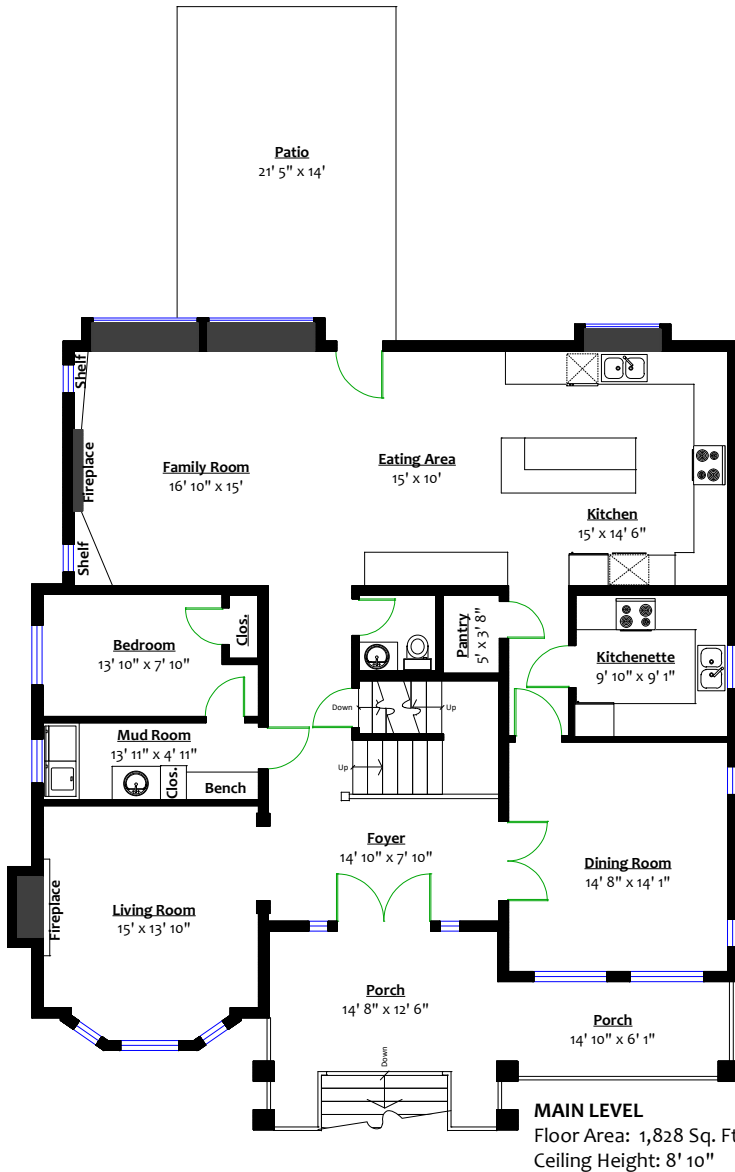
**RE/MAX**

All Points Realty

info@toddconner.com



**DETACHED GARAGE**  
Floor Area: 755 Sq. Ft.



\*\* While all reasonable attempts have been made to ensure accuracy and the square footage and room dimensions are believed to be correct to ANSI Standards, due to the possibility of human error the information cannot be guaranteed. E&O Insured for \$1,000,000