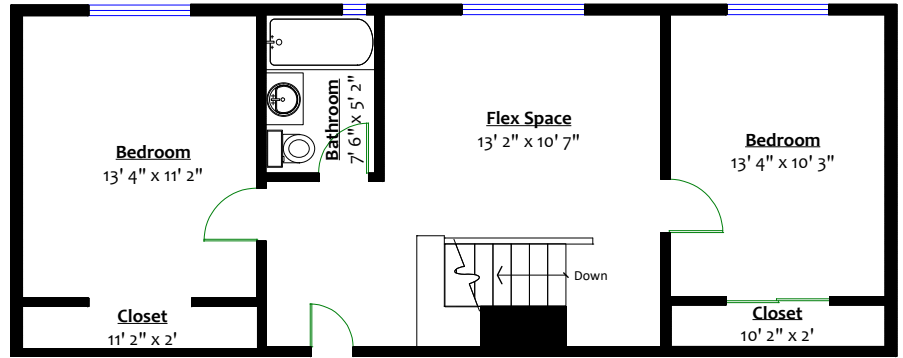


1716 Eastern Drive, Port Coquitlam, B.C.

Totals**

Main Level:	1,775 sq. ft.
Upper Level:	696 sq. ft.
Total:	2,471 sq. ft.
Garage:	223 sq. ft.
Shed 1:	129 sq. ft.
Shed 2:	95 sq. ft.
Patio:	974 sq. ft.
Gazebo:	168 sq. ft.
Total:	1,589 sq. ft.

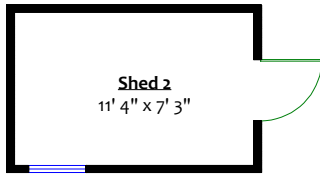


UPPER LEVEL
Floor Area: 696 Sq. Ft.
Ceiling Height: 7' 8"

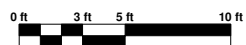
To Attic



Todd Conner **RE/MAX**
604.290.2269 **All Points Realty**
info@toddconner.com



MAIN LEVEL
Floor Area: 1,775 Sq. Ft.
Ceiling Height: 8'



** While all reasonable attempts have been made to ensure accuracy and the square footage and room dimensions are believed to be correct to ANSI Standards, due to the possibility of human error the information cannot be guaranteed. E&O Insured for \$1,000,000