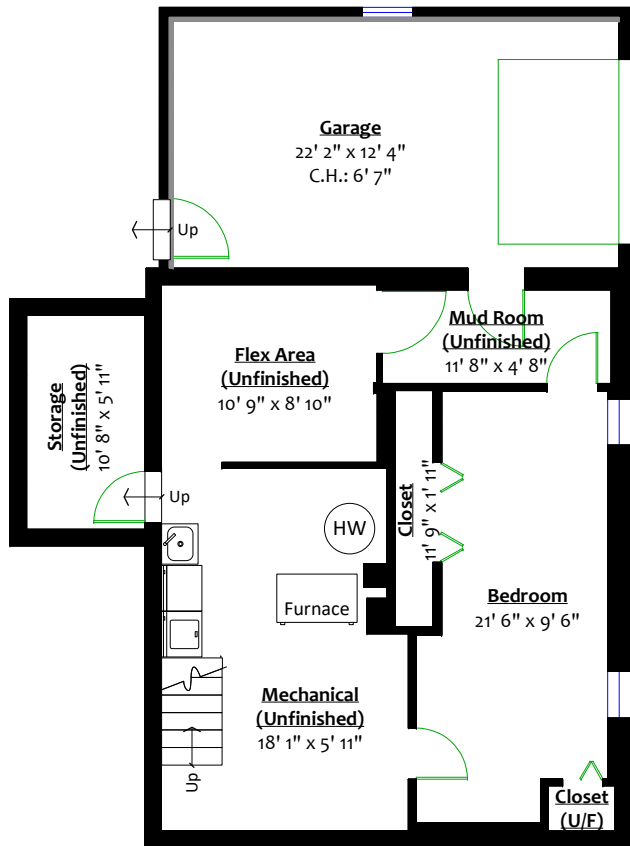


# 1014 Nanaimo Street, New Westminster, B.C.

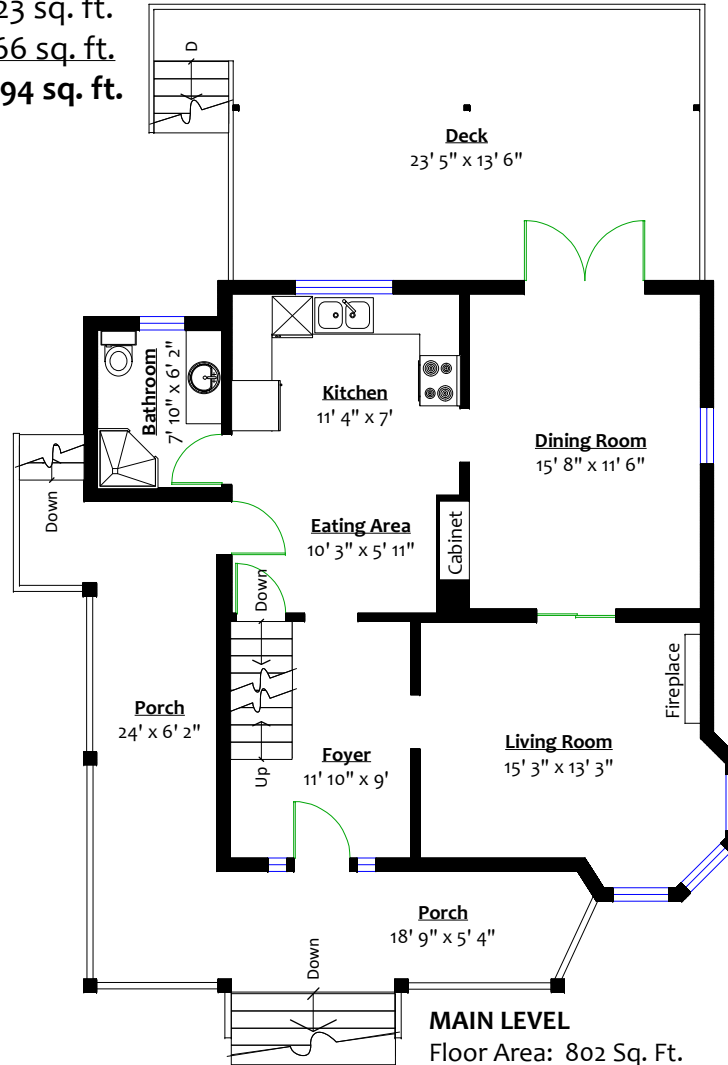


**TODD CONNER**  
604.290.2269  
info@toddconner.com  
**RE/MAX**  
All Points Realty

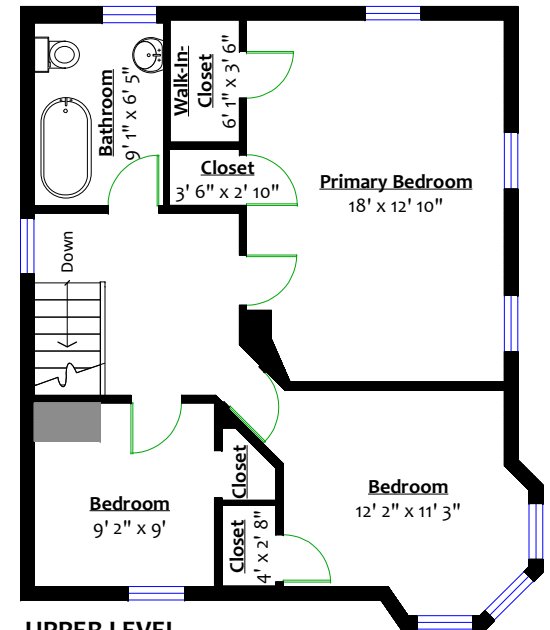
<b>Totals**</b>		<b>Other Areas**</b>	
Main Level:	802 sq. ft.	Garage:	305 sq. ft.
Upper Level:	745 sq. ft.	Deck:	323 sq. ft.
Lower Level:	779 sq. ft.	Porch:	266 sq. ft.
<b>Total:</b>	<b>2,326 sq. ft.</b>	<b>Total:</b>	<b>894 sq. ft.</b>



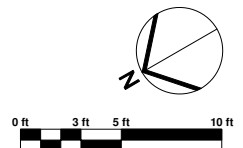
**LOWER LEVEL**  
Floor Area: 779 Sq. Ft.  
Ceiling Height: 6' 4"



**MAIN LEVEL**  
Floor Area: 802 Sq. Ft.  
Ceiling Height: 9'



**UPPER LEVEL**  
Floor Area: 745 Sq. Ft.  
Ceiling Height: 8'



\*\* While all reasonable attempts have been made to ensure accuracy and the square footage and room dimensions are believed to be correct to ANSI Standards, due to the possibility of human error the information cannot be guaranteed. E&O Insured for \$1,000,000  
\*\*Disclaimer: Includes under-height & unfinished areas