

# 4152 Pender Street, Burnaby, B.C.



**RE/MAX**  
All Points Realty

**Todd Conner**

604.290.2269

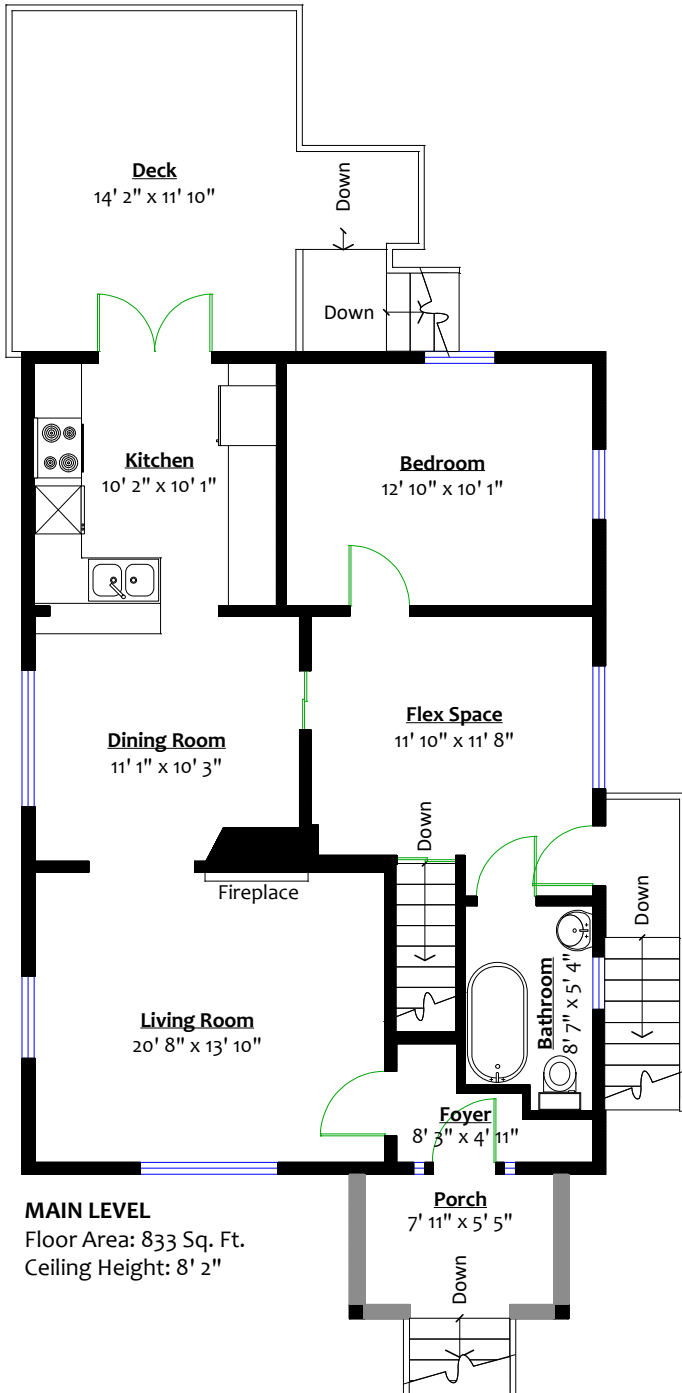
info@toddconner.com

**Totals\*\***

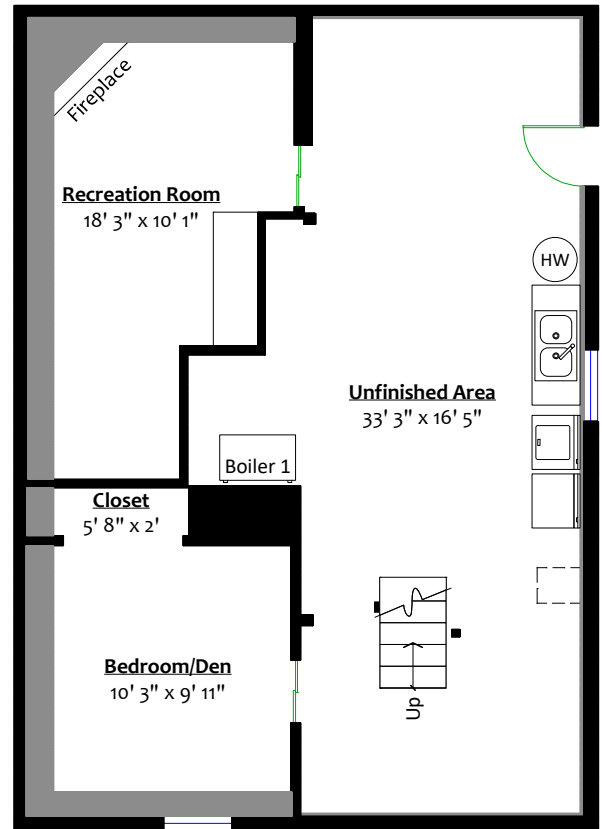
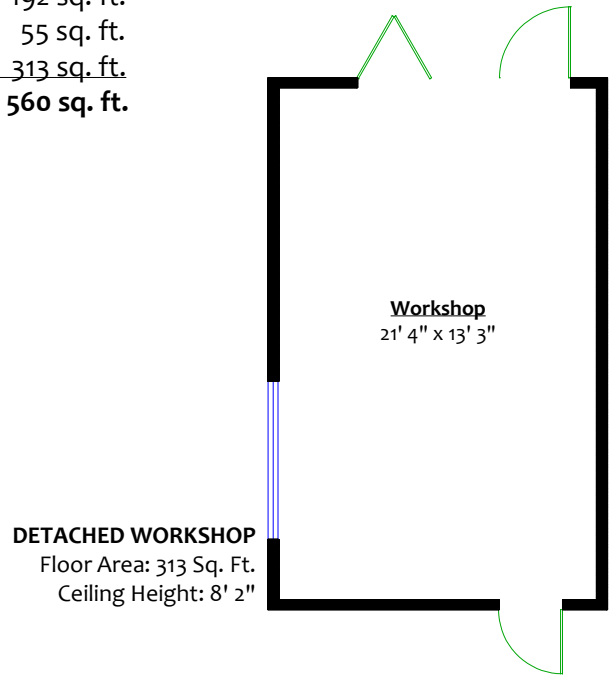
Main Level: 833 sq. ft.  
Lower Level: 836 sq. ft.  
**Total: 1,669 sq. ft.**

**Other Areas\*\***

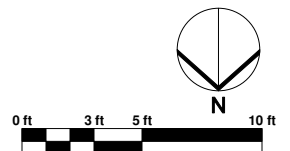
Deck: 192 sq. ft.  
Porch: 55 sq. ft.  
Detached Workshop: 313 sq. ft.  
**Total: 560 sq. ft.**



**MAIN LEVEL**  
Floor Area: 833 Sq. Ft.  
Ceiling Height: 8' 2"



**LOWER LEVEL**  
Floor Area: 836 Sq. Ft.  
Ceiling Height: 6' (under height)



\*\* While all reasonable attempts have been made to ensure accuracy and the square footage and room dimensions are believed to be correct to ANSI Standards, due to the possibility of human error the information cannot be guaranteed. E&O Insured for \$1,000,000