

RE/MAX
All Points Realty

TODD CONNER

604.290.2269

info@toddconner.com



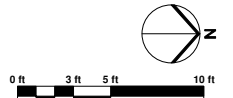
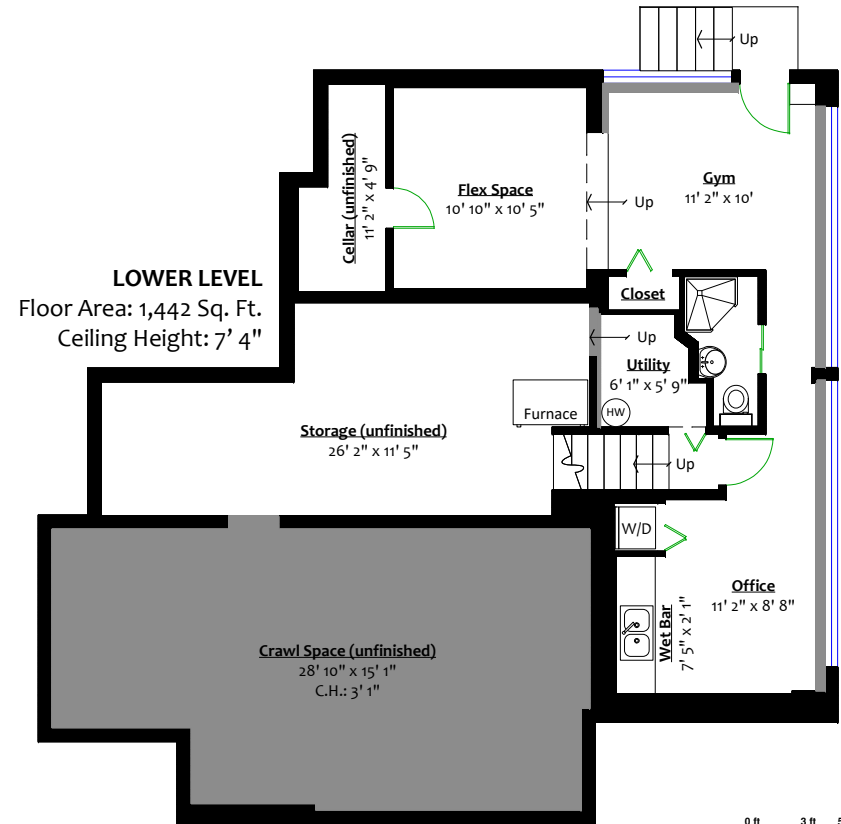
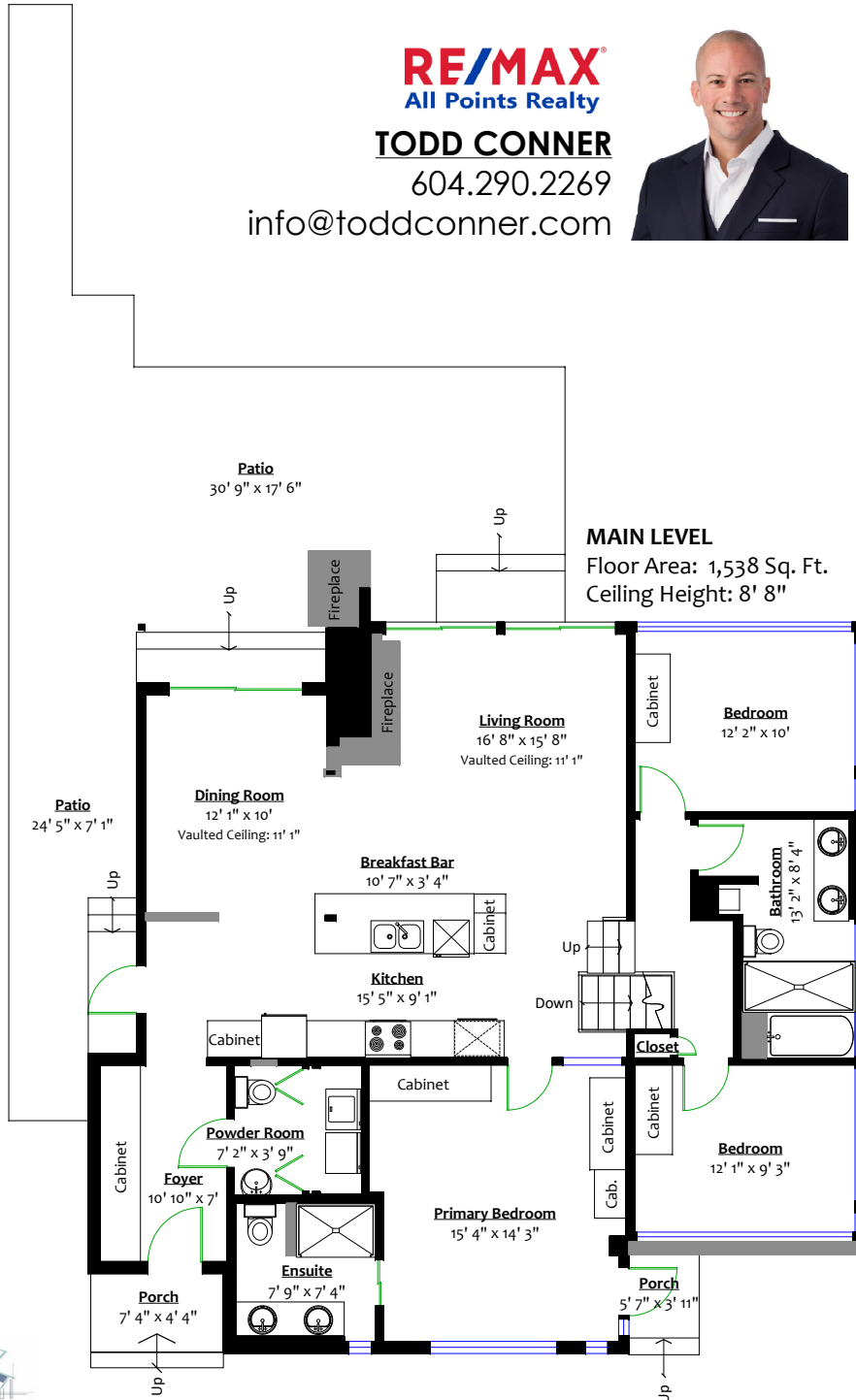
149 Harvey Street, New Westminster, B.C.

Totals**

Main Level:	1,538 sq. ft.
Lower Level:	721 sq. ft.
Total:	2,259 sq. ft.
Unfinished Areas:	721 sq. ft.
Grand Total:	2,980 sq. ft.

Other Areas**

Porch:	32 sq. ft.
Primary Porch:	22 sq. ft.
Patio:	733 sq. ft.
Lower Entry:	29 sq. ft.
Total:	816 sq. ft.



** While all reasonable attempts have been made to ensure accuracy and the square footage and room dimensions are believed to be correct to ANSI Standards, due to the possibility of human error the information cannot be guaranteed. E&O Insured for \$1,000,000