



RE/MAX
All Points Realty

TODD CONNER

604.290.2269

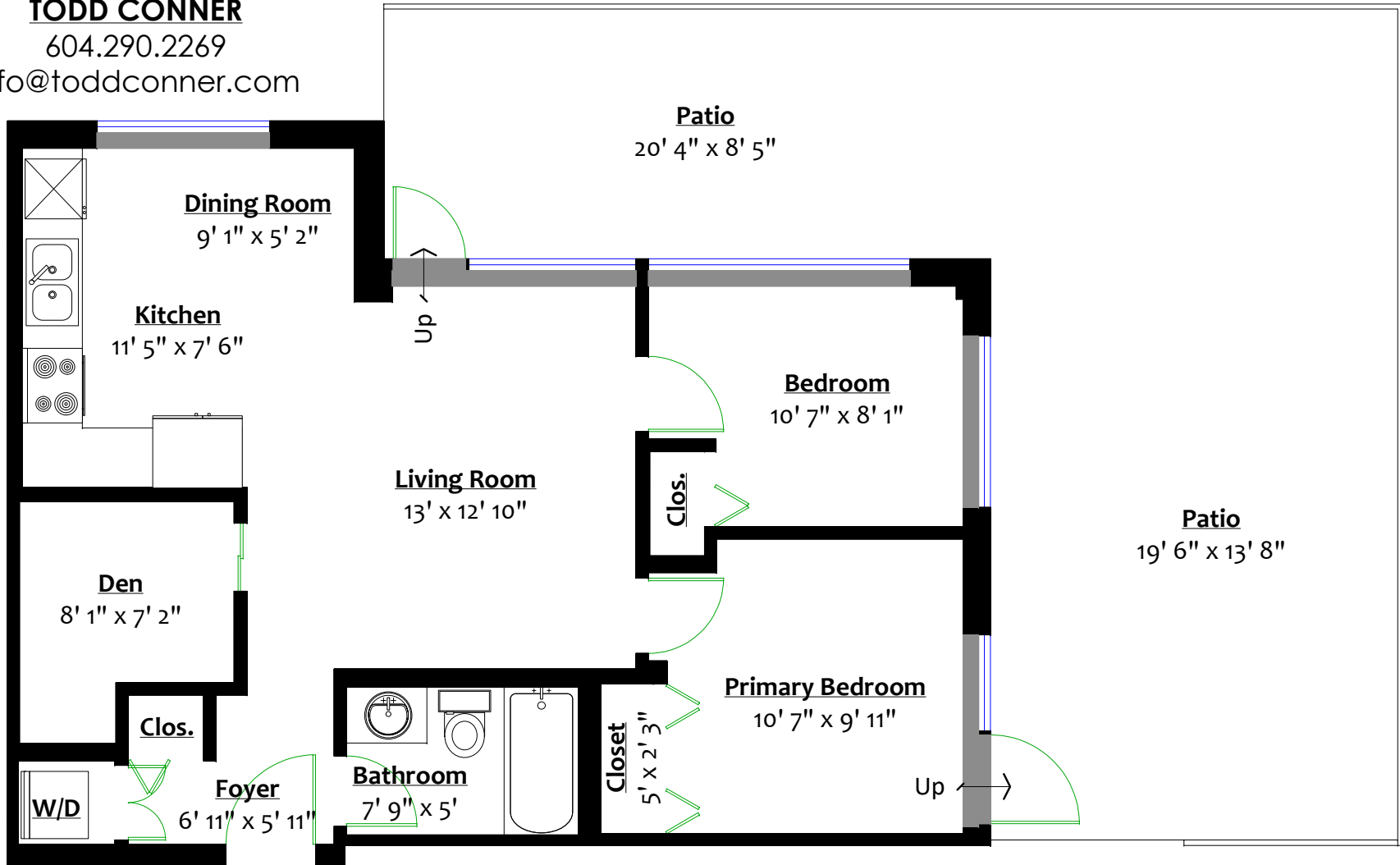
info@toddconner.com

**304 - 258 6th Street,
New Westminster, B.C.**

Totals**

Main Level: 713 sq. ft.

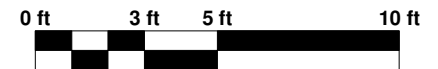
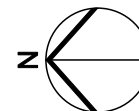
Patio: 552 sq. ft.



MAIN LEVEL

Floor Area: 713 Sq. Ft.

Ceiling Height: 8'



** While all reasonable attempts have been made to ensure accuracy and the square footage and room dimensions are believed to be correct to ANSI Standards, due to the possibility of human error the information cannot be guaranteed. E&O Insured for \$1,000,000