

**1007 Edinburgh Street,  
New Westminster, B.C.**

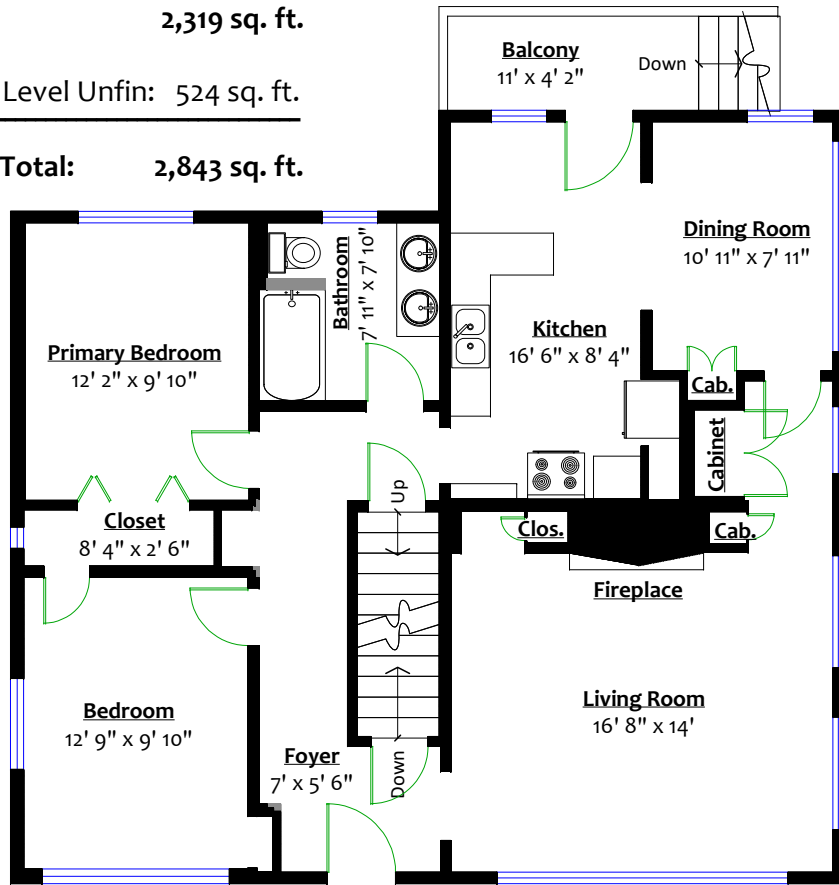
**Totals\*\***

Main Level: 1,150 sq. ft. Balcony: 52 sq. ft.  
 Upper Level: 631 sq. ft.  
 Lower Level: 538 sq. ft.

**Total: 2,319 sq. ft.**

Lower Level Unfin: 524 sq. ft.

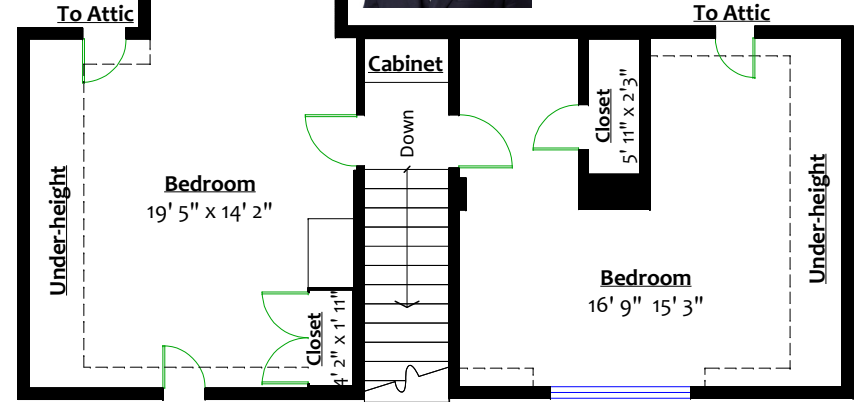
**Grand Total: 2,843 sq. ft.**



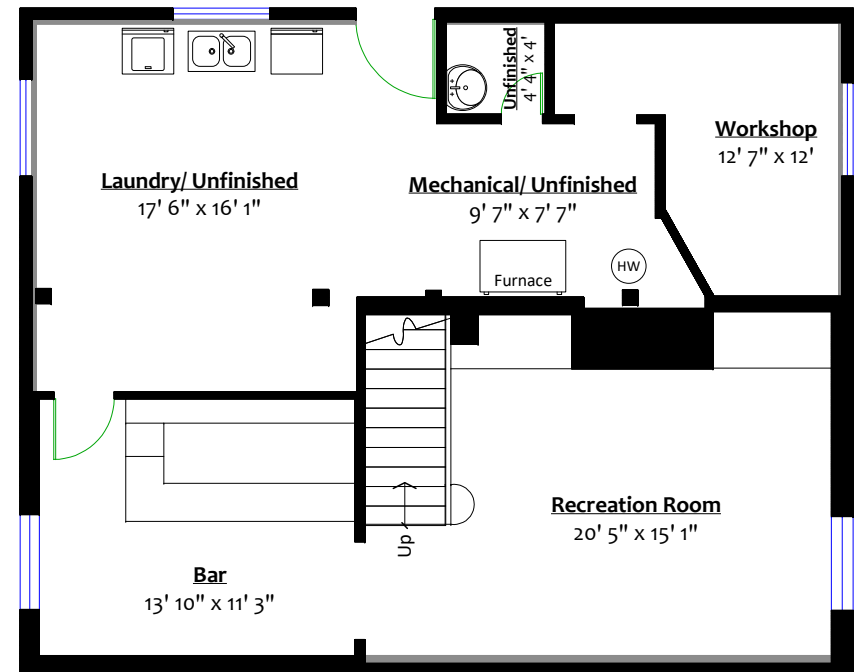
**MAIN LEVEL**  
 Floor Area: 1,150 Sq. Ft.  
 Ceiling Height: 7' 10"



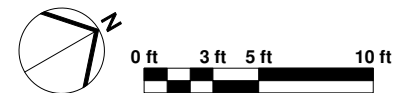
**TODD CONNER**  
 604.290.2269 **RE/MAX**  
 All Points Realty  
 info@toddconner.com



**UPPER LEVEL**  
 Floor Area: 631 Sq. Ft.  
 Ceiling Height: 7' 6"



**LOWER LEVEL**  
 Floor Area: 538 Sq. Ft.  
 Ceiling Height: 7'



\*\* While all reasonable attempts have been made to ensure accuracy and the square footage and room dimensions are believed to be correct to ANSI Standards, due to the possibility of human error the information cannot be guaranteed. E&O Insured for \$1,000,000  
 \*\*Includes under-height and unfinished areas