



**RE/MAX**  
All Points Realty  
**TODD CONNER**

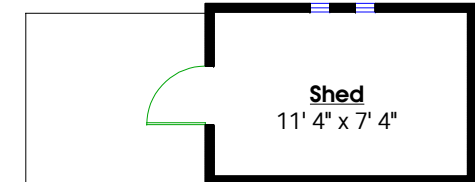
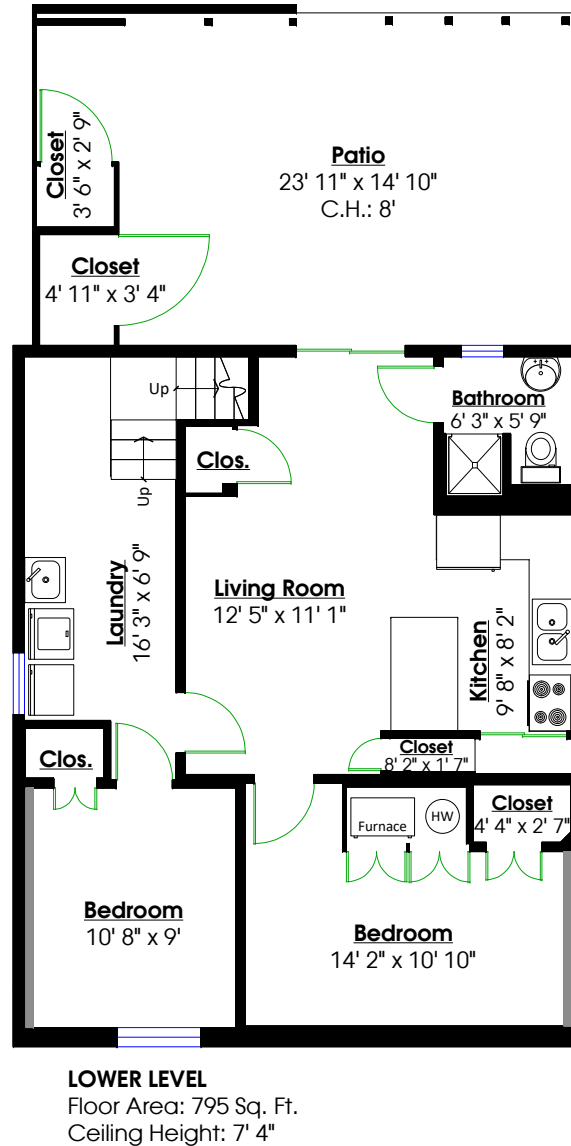
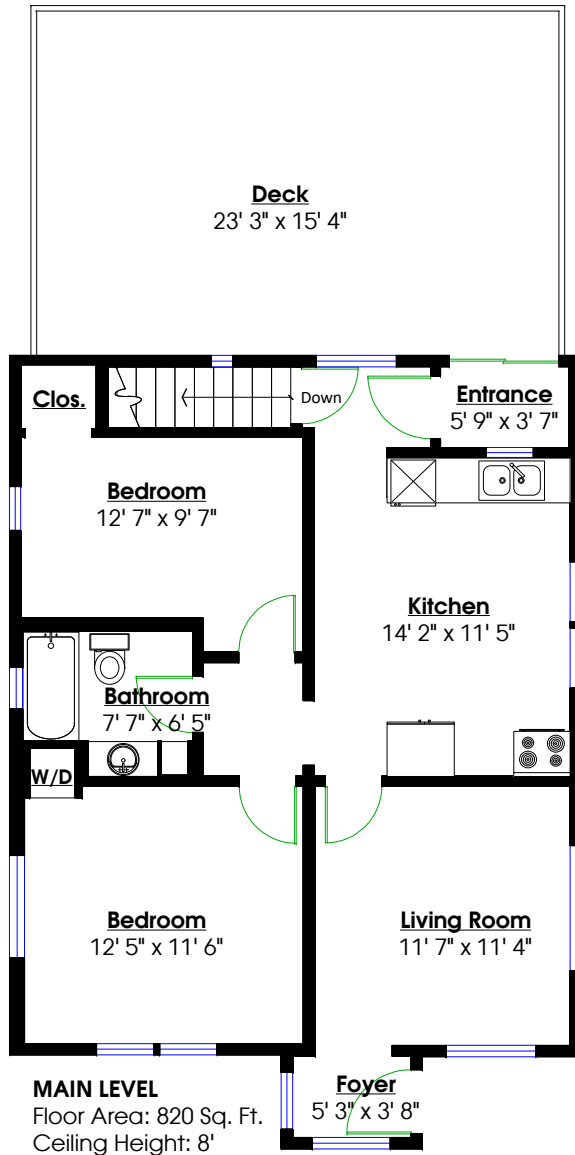
604.290.2269  
info@toddconner.com

## 2334 Trapp Road, New Westminster, B.C.

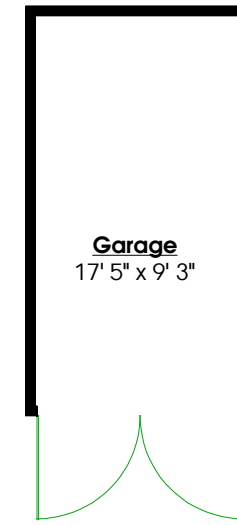
### Totals\*\*

Main Level: 820 sq. ft.	Deck: 370 sq. ft.
Lower Level: 795 sq. ft.	Patio: 357 sq. ft.
	Garage: 184 sq. ft.
<b>Total: 1,615 sq. ft.</b>	<b>Shed: 97 sq. ft.</b>

**Total: 1,008 sq. ft.**



**SHED**  
Floor Area: 97 Sq. Ft.  
Ceiling Height: 8'



**DETACHED GARAGE**  
Floor Area: 184 Sq. Ft.  
Ceiling Height: 7' 1"

