

# 1408 Nanaimo Street, New Westminster, B.C.



**RE/MAX**  
All Points Realty  
**TODD CONNER**

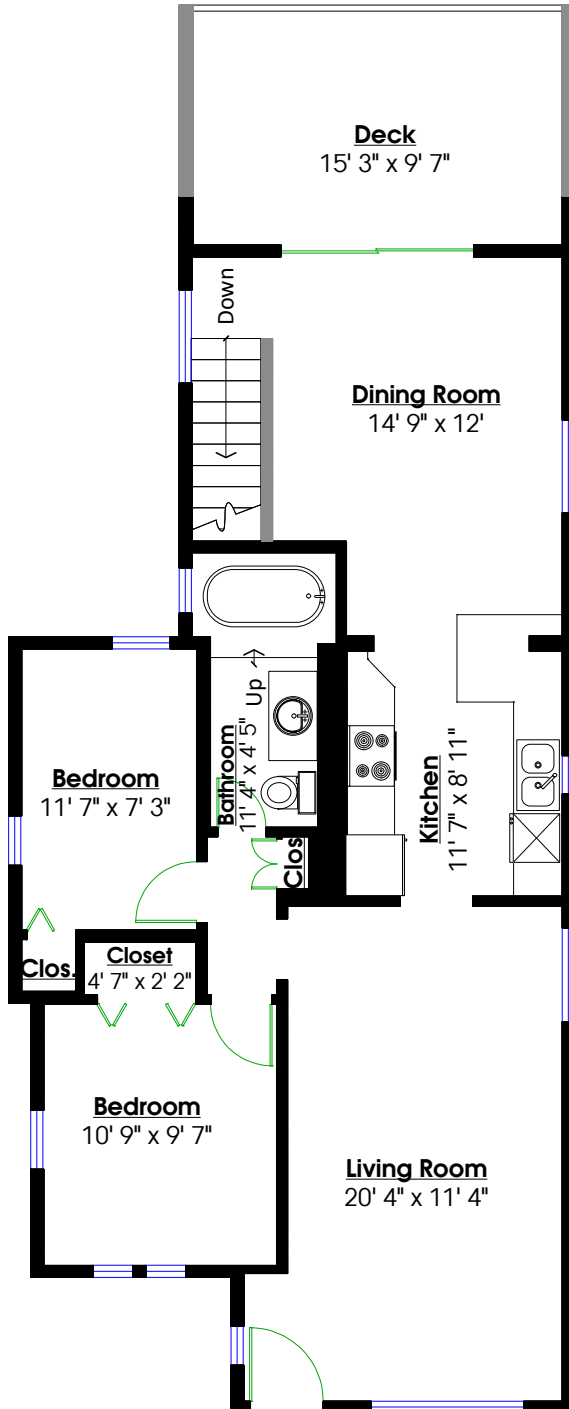
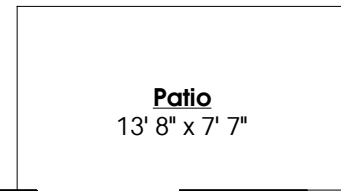
604.290.2269

info@toddconner.com

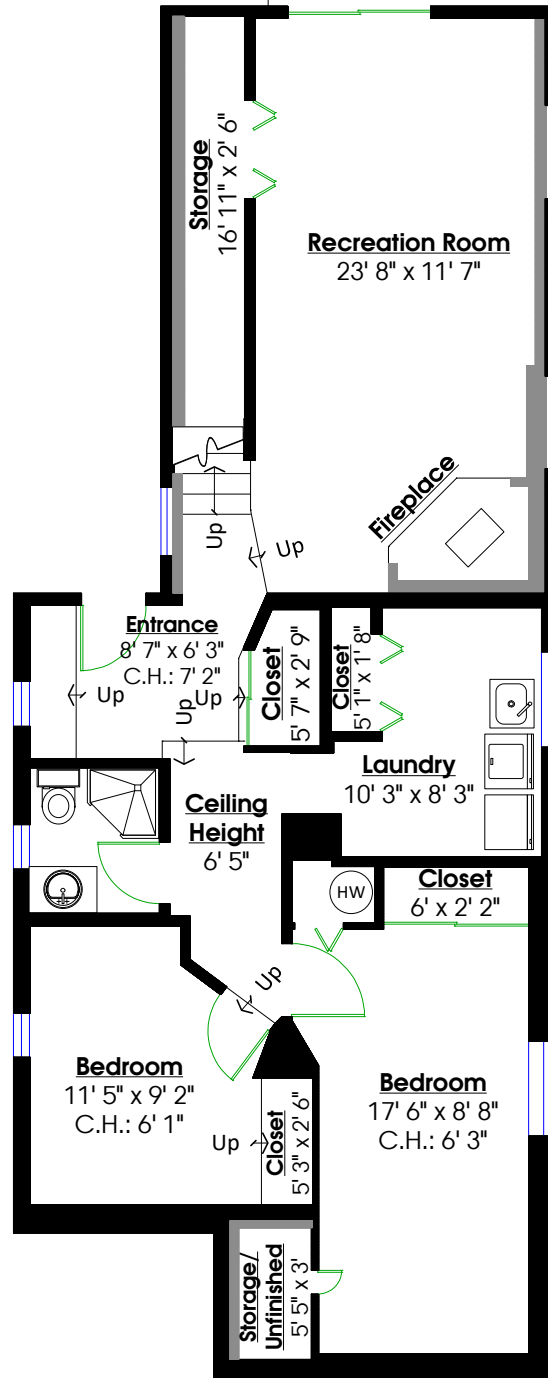
**Totals\*\***

Main Level: 944 sq. ft. Deck: 160 sq. ft.  
Lower Level: 1,070 sq. ft. Patio: 103 sq. ft.

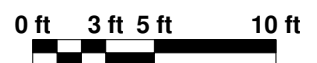
**Total: 2,014 sq. ft. Total: 263 sq. ft.**



**MAIN LEVEL**  
Floor Area: 944 Sq. Ft.  
Ceiling Height: 8'



**LOWER LEVEL**  
Floor Area: 1,070 Sq. Ft.  
Ceiling Height: 7' 8"



\*\* While all reasonable attempts have been made to ensure accuracy and the square footage and room dimensions are believed to be correct to ANSI Standards, due to the possibility of human error the information cannot be guaranteed. E&O Insured for \$1,000,000  
\*\*Includes unfinished and under-height areas