

**1703 Edinburgh Street,  
New Westminster, B.C.**

**Totals\*\***

Main Level:	1,028 sq. ft.	Porch:	39 sq. ft.
Upper Level:	432 sq. ft.	Deck:	53 sq. ft.
Lower Level:	972 sq. ft.	Covered Deck:	34 sq. ft.

**Total: 2,432 sq. ft. Total: 126 sq. ft.**

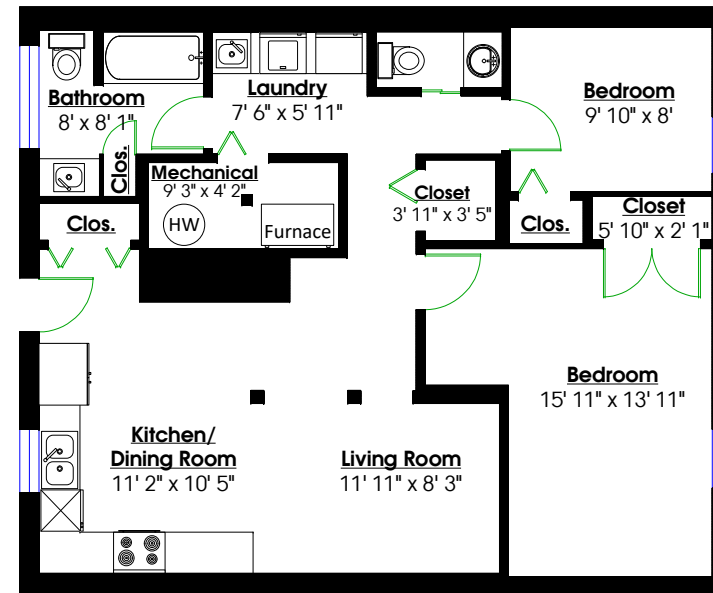
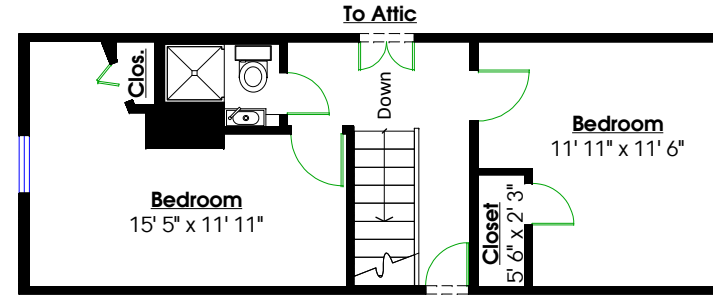
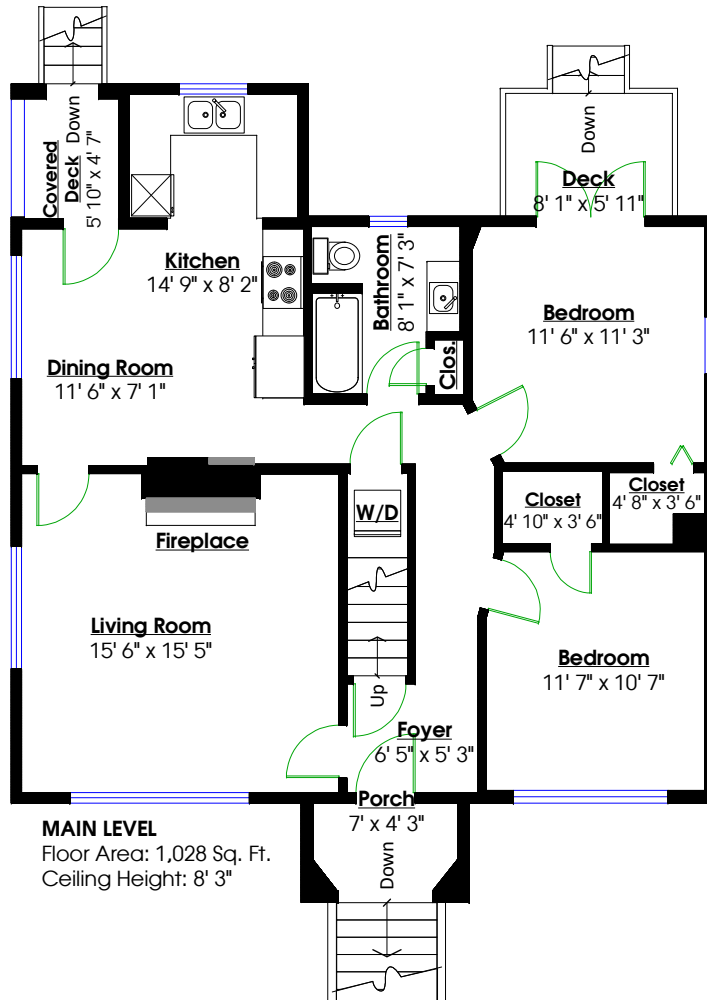


**RE/MAX**  
All Points Realty

**TODD CONNER**

604.290.2269

info@toddconner.com



\*\* While all reasonable attempts have been made to ensure accuracy and the square footage and room dimensions are believed to be correct to ANSI Standards, due to the possibility of human error the information cannot be guaranteed. E&O Insured for \$1,000,000  
\*\*Includes mechanical

