

**1701 - 615 Belmont Street,
New Westminster, B.C.**



TODD CONNER

604.290.2269

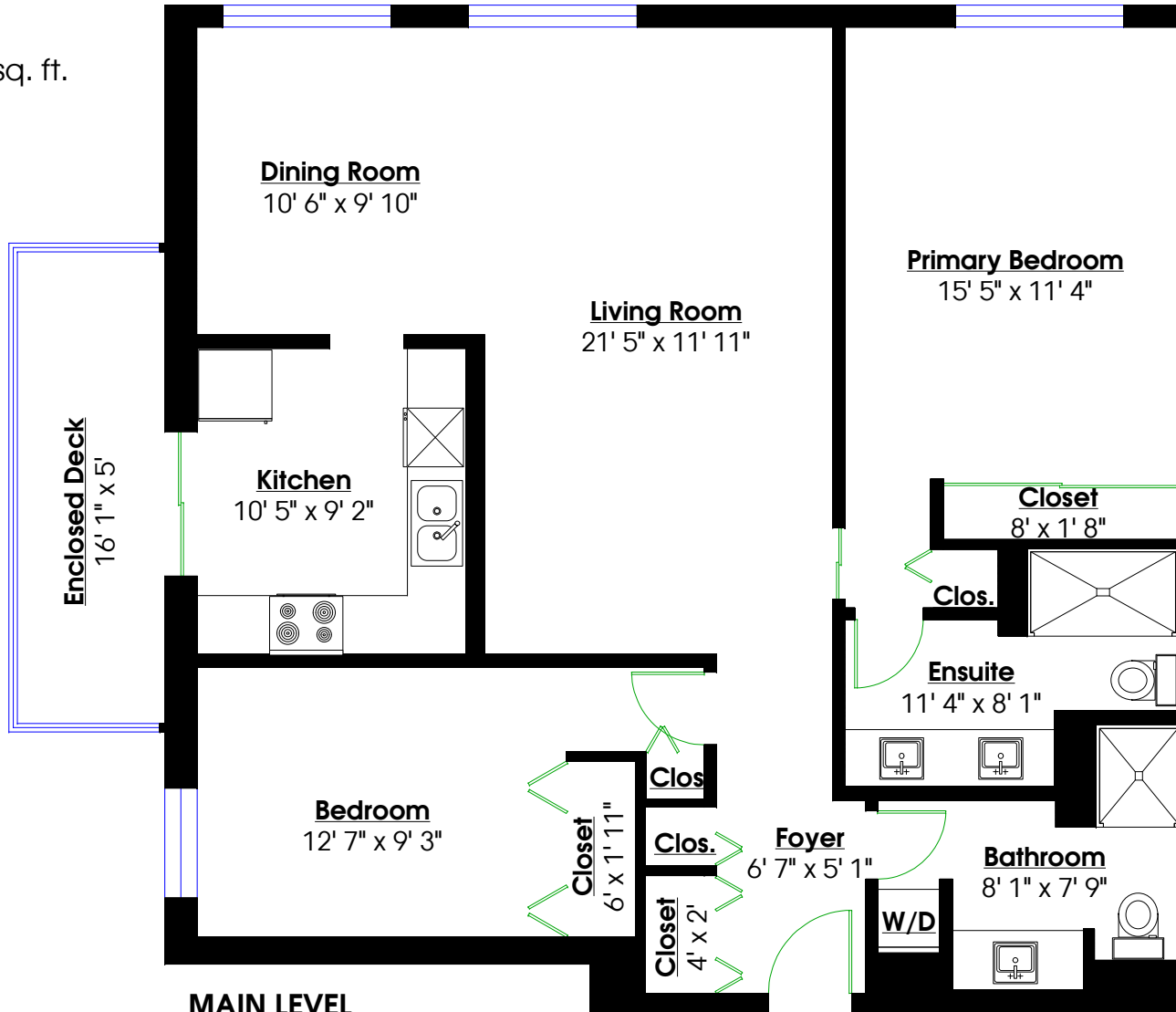
info@toddconner.com

RE/MAX
All Points Realty

Totals**

Main Level: 1,177 sq. ft.

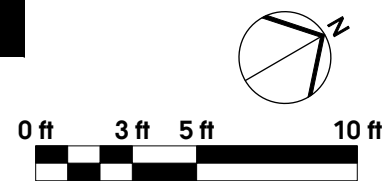
Enclosed Deck: 89 sq. ft.



MAIN LEVEL

Floor Area: 1,177 Sq. Ft.

Ceiling Height: 7' 9"



** While all reasonable attempts have been made to ensure accuracy and the square footage and room dimensions are believed to be correct to ANSI Standards, due to the possibility of human error the information cannot be guaranteed. E&O Insured for \$1,000,000