

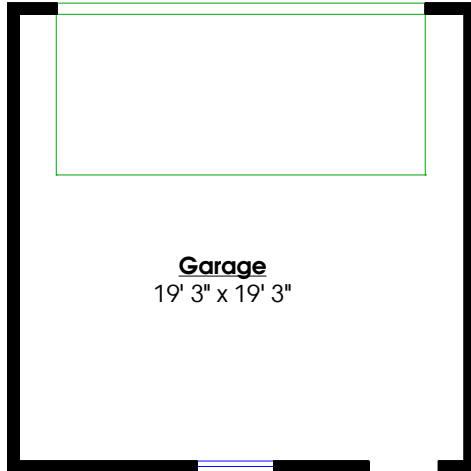


TODD CONNER
 604.290.2269 **RE/MAX**
 All Points Realty
 info@toddconner.com

**181 Phillips Street,
 New Westminster, B.C.**

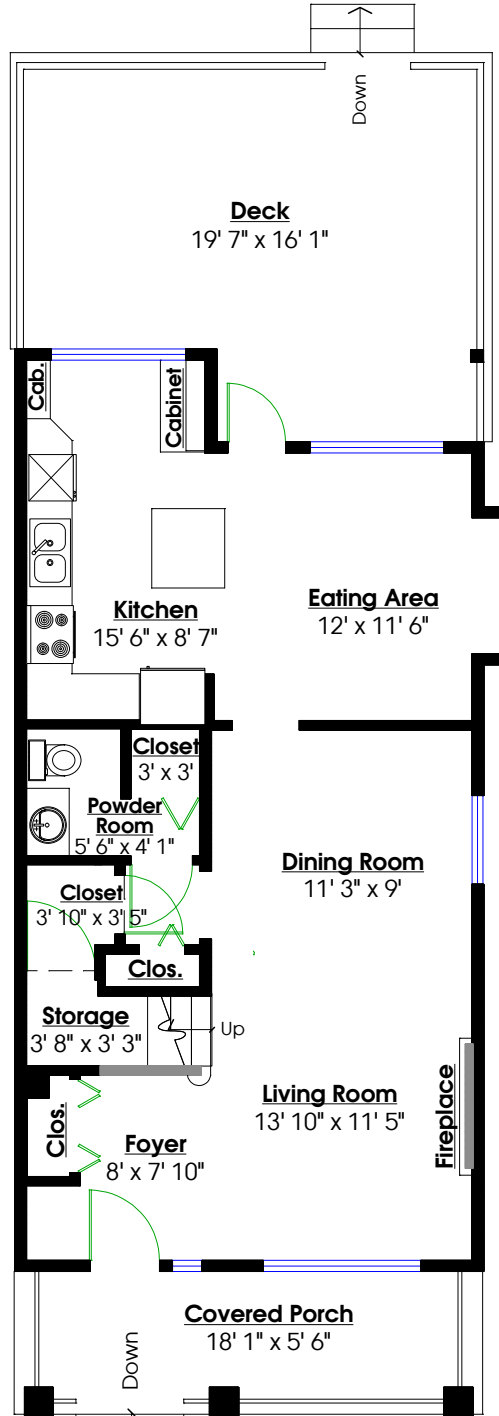
Totals**

Main Level: 766 sq. ft.	Porch: 138 sq. ft.
Upper Level: 722 sq. ft.	Deck: 322 sq. ft.
Total: 1,488 sq. ft.	Total: 868 sq. ft.



Garage
 19' 3" x 19' 3"

DETACHED GARAGE
 Floor Area: 408 Sq. Ft.
 Ceiling Height: 8'



Deck
 19' 7" x 16' 1"

Kitchen
 15' 6" x 8' 7"

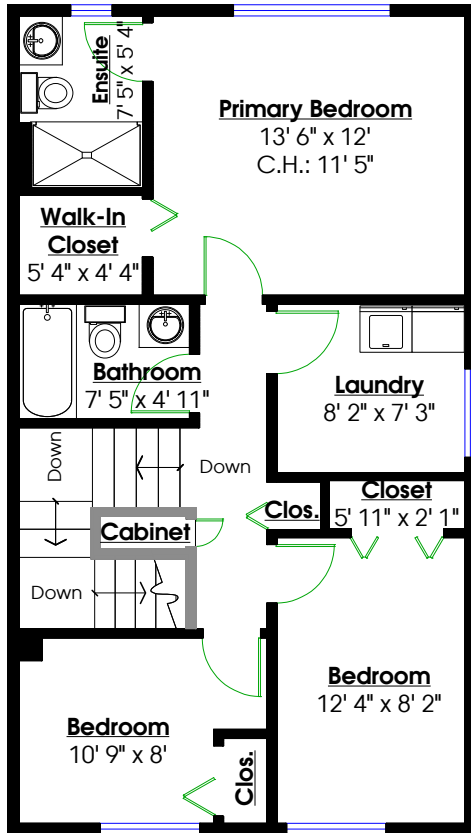
Eating Area
 12' x 11' 6"

Dining Room
 11' 3" x 9'

Living Room
 13' 10" x 11' 5"

Foyer
 8' x 7' 10"

Covered Porch
 18' 1" x 5' 6"



Primary Bedroom
 13' 6" x 12'
 C.H.: 11' 5"

Bathroom
 7' 5" x 4' 11"

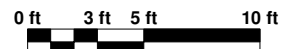
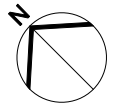
Laundry
 8' 2" x 7' 3"

Bedroom
 12' 4" x 8' 2"

Bedroom
 10' 9" x 8'

UPPER LEVEL
 Floor Area: 722 Sq. Ft.
 Ceiling Height: 8'

MAIN LEVEL
 Floor Area: 766 Sq. Ft.
 Ceiling Height: 9'



** While all reasonable attempts have been made to ensure accuracy and the square footage and room dimensions are believed to be correct to ANSI Standards, due to the possibility of human error the information cannot be guaranteed. E&O Insured for \$1,000,000