

825 Ridgeway Avenue, North Vancouver, B.C.

Totals**

Main Level: 760 sq. ft. Deck: 99 sq. ft.
 Upper Level: 675 sq. ft. Porch: 120 sq. ft.
 Lower Level: 858 sq. ft.

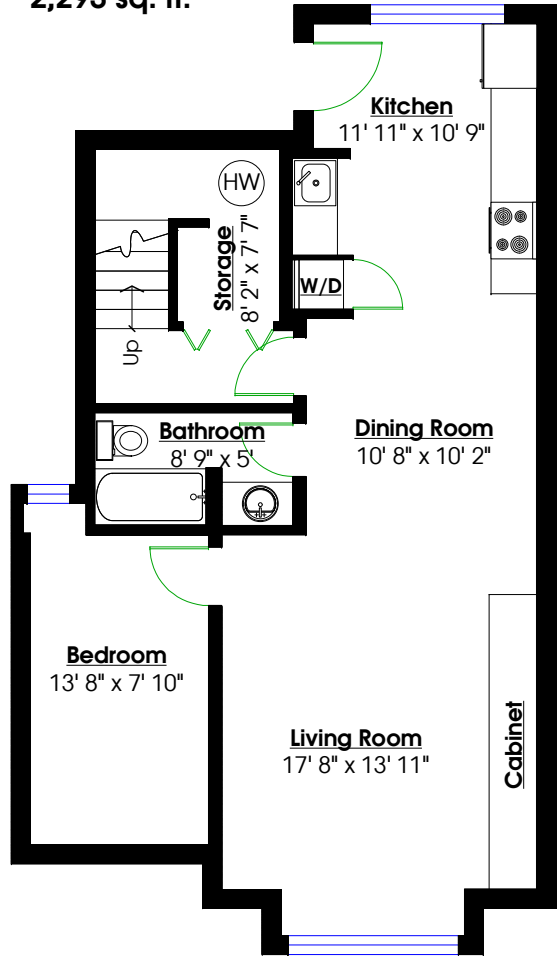
Total: 2,293 sq. ft.



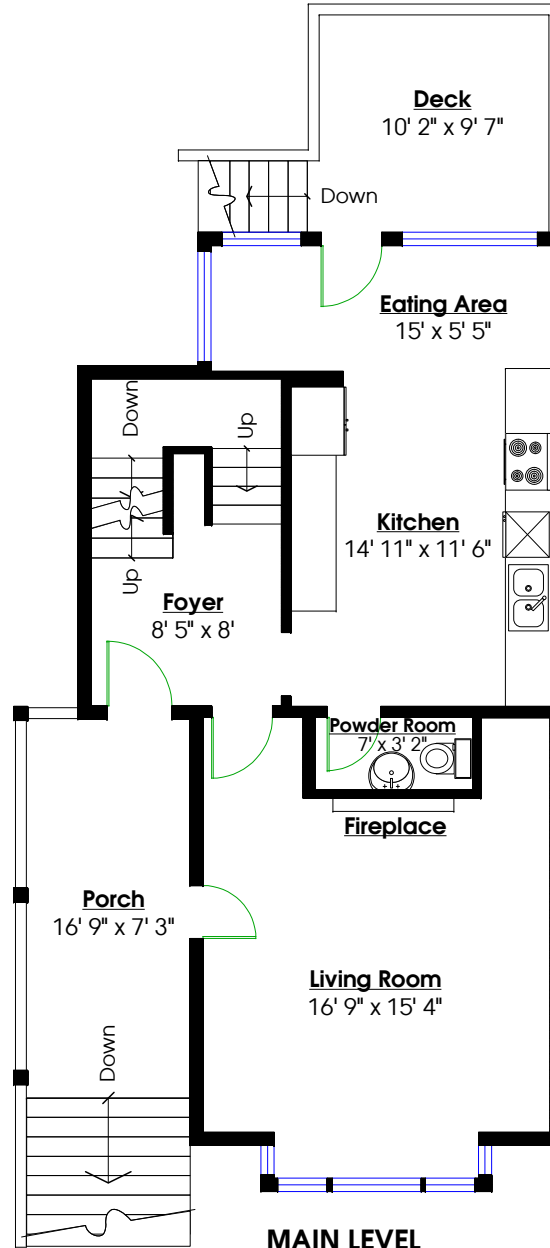
TODD CONNER

604.290.2269

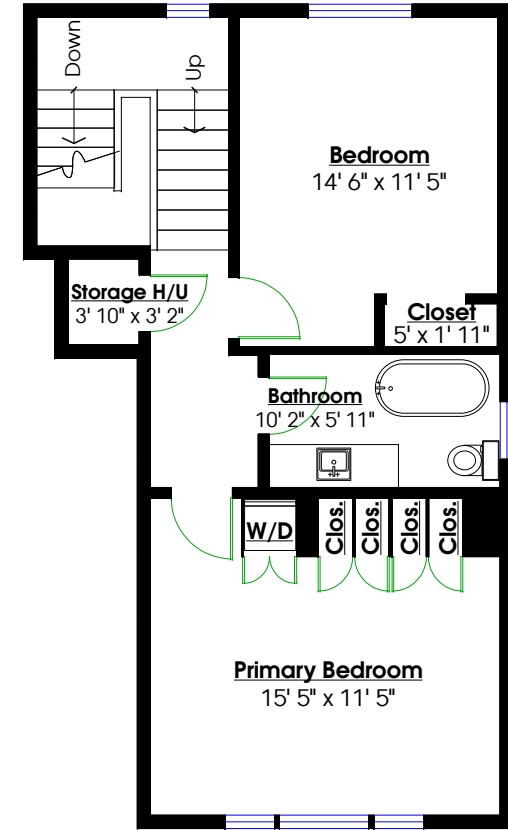
info@toddconner.com



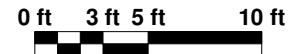
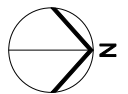
LOWER LEVEL
 Floor Area: 858 Sq. Ft.
 Ceiling Height: 7' 4"



MAIN LEVEL
 Floor Area: 760 Sq. Ft.
 Ceiling Height: 9'



UPPER LEVEL
 Floor Area: 675 Sq. Ft.
 Ceiling Height: 8'



** While all reasonable attempts have been made to ensure accuracy and the square footage and room dimensions are believed to be correct to ANSI Standards, due to the possibility of human error the information cannot be guaranteed. E&O Insured for \$1,000,000