

420 Alberta Street, New Westminster, B.C.

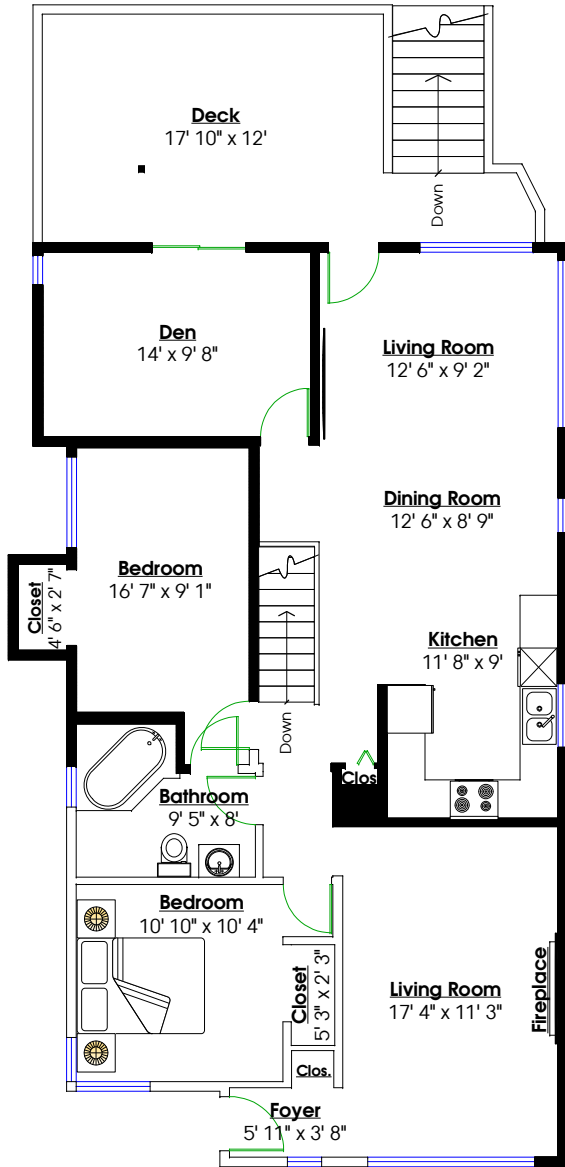
Totals**

Main Level: 1,271 sq. ft.
Lower Level: 1,119 sq. ft.

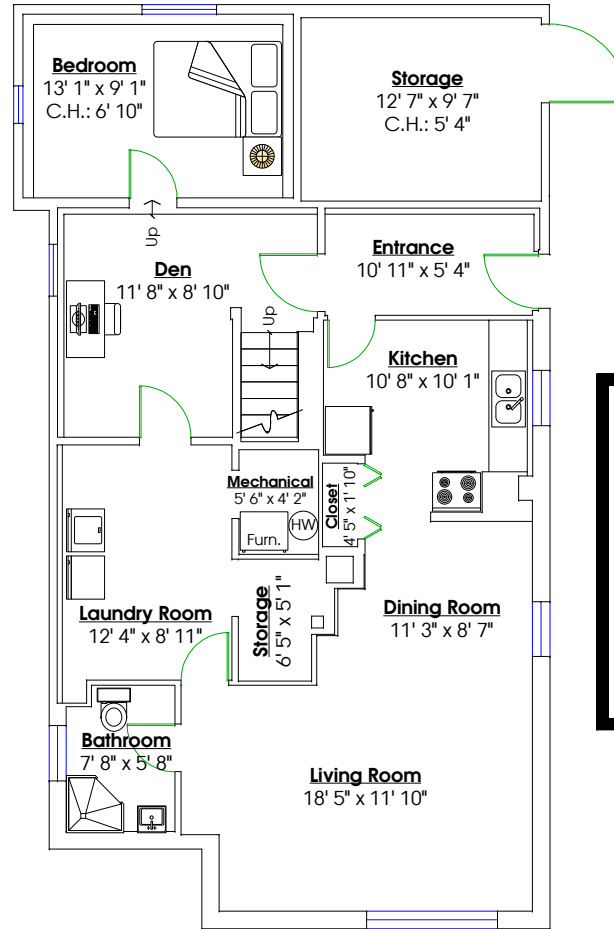
Total: 2,390 sq. ft.

Deck: 241 sq. ft.
Storage: 134 sq. ft.
D. Garage: 383 sq. ft.

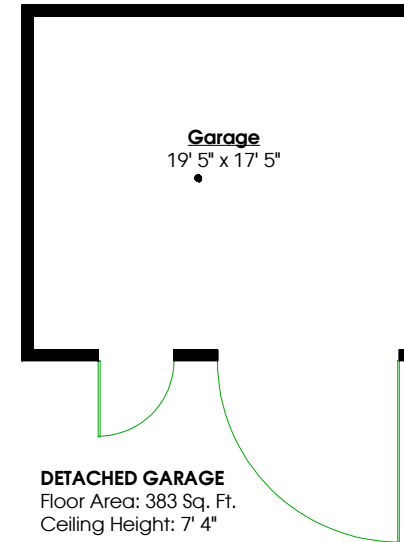
Total: 758 sq. ft.



MAIN LEVEL
Floor Area: 1,271 Sq. Ft.
Ceiling Height: 7' 10"'



LOWER LEVEL
Floor Area: 1,119 Sq. Ft.
Ceiling Height: 7' 7"'



DETACHED GARAGE
Floor Area: 383 Sq. Ft.
Ceiling Height: 7' 4"'



RE/MAX
All Points Realty

TODD CONNER

604.290.2269

info@toddconner.com

