

**401 - 1128 6th Avenue,
New Westminster, BC**

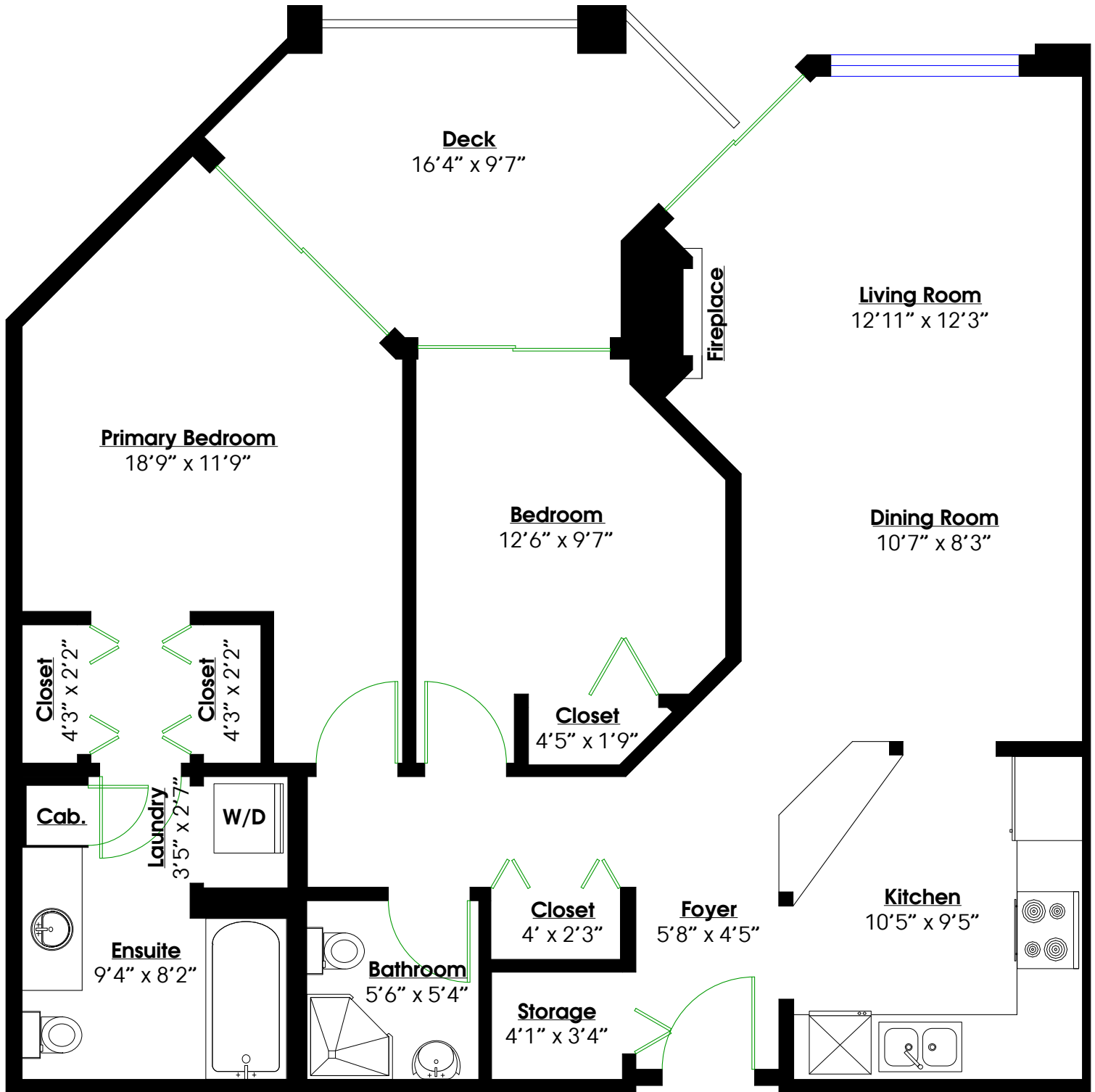
Total**

Main Level: 935 sq.ft. Deck: 109 sq.ft.



Your Favourite Real Estate Team

604.290.2269 **REMAX**
info@toddconner.com



MAIN LEVEL

Floor Area: 935 Sq. Ft.

Ceiling Height: 7'11"



0 ft 3 ft 5 ft 10 ft