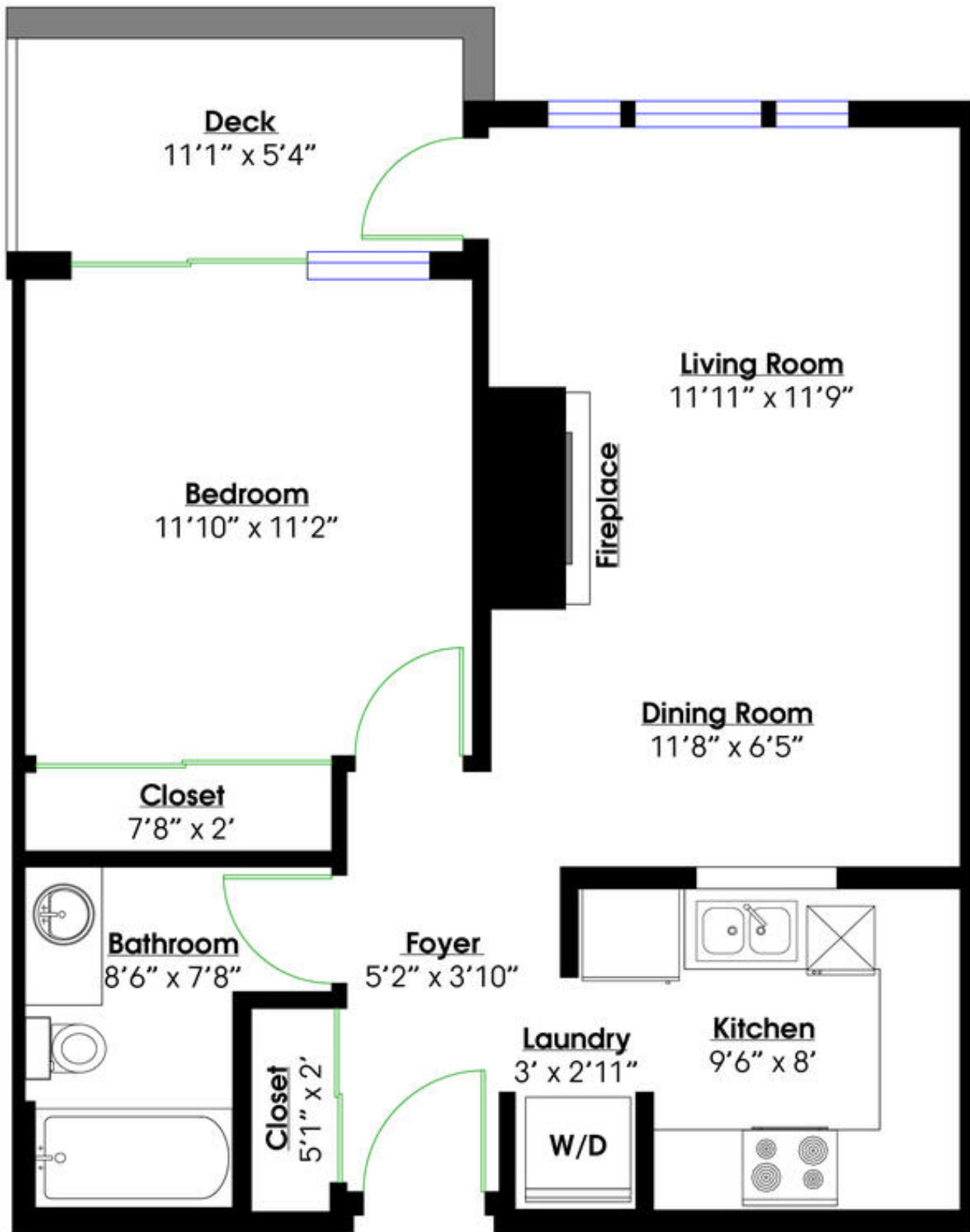


55 Blackberry Drive, New Westminster, BC

Total**

Main Level: 630 sq.ft. Deck: 59 sq.ft.



MAIN LEVEL

Floor Area: 630 Sq. Ft.

Ceiling Height: 8'



0 ft 3 ft 5 ft 10 ft

**While all reasonable attempts have been made to ensure accuracy and the square footage and room dimensions are believed to be correct to ANSI Standards, due to the possibility of human error the information cannot be guaranteed. E&O Insured for \$1,000,000