



**Todd & Karen Conner**  
**Your Favourite Real Estate Team**  
 604.290.2269 **REMAX**  
 info@toddconner.com

## 2-608 Ewen Avenue, New Westminster, BC

Total\*\*

Main Level: 674 sq.ft.  
 Upper Level: 715 sq.ft.  
 Lower Level: 103 sq.ft.

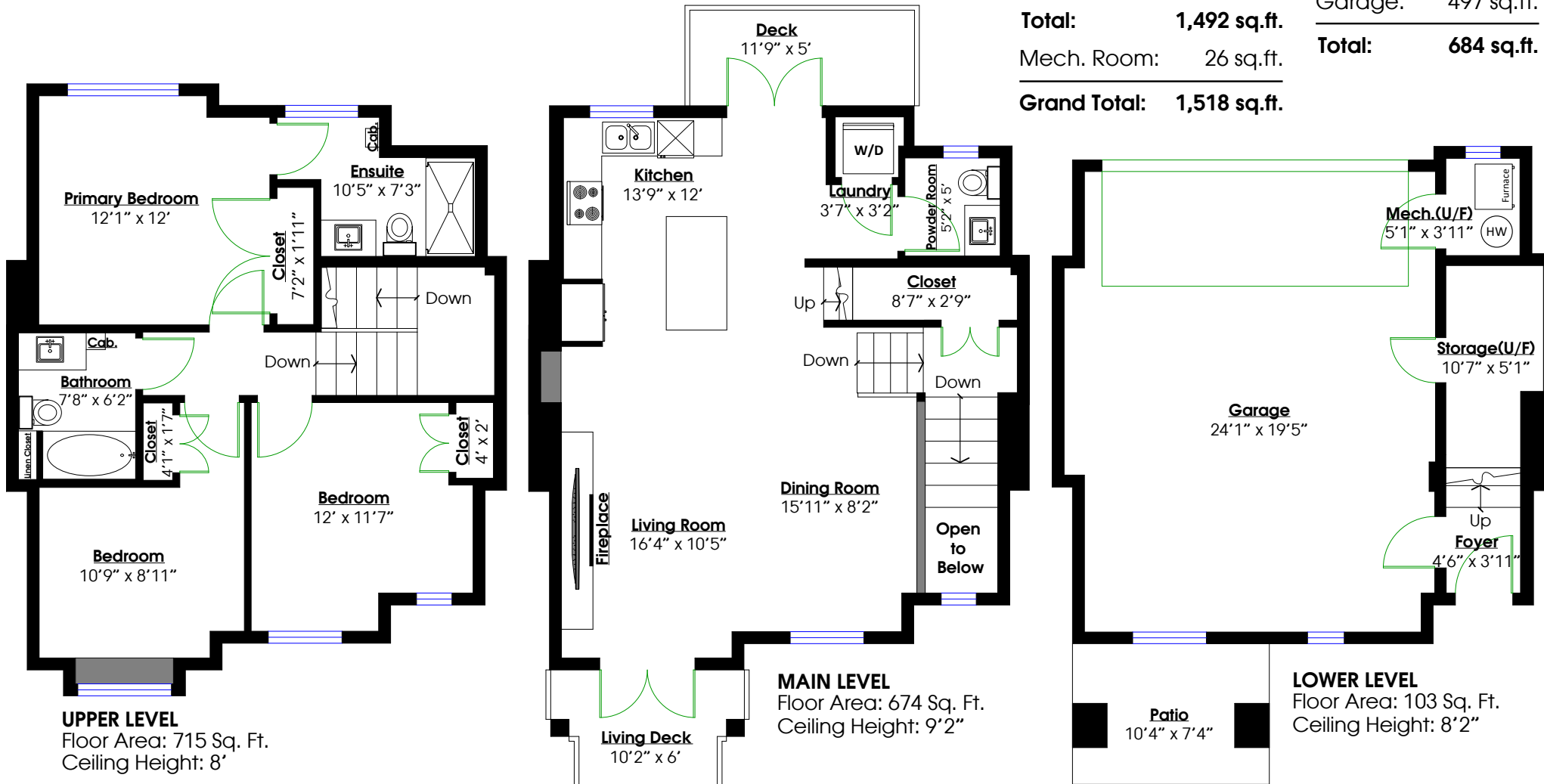
Deck: 64 sq.ft.  
 Living Deck: 56 sq.ft.  
 Patio: 67 sq.ft.  
 Garage: 497 sq.ft.

**Total: 1,492 sq.ft.**

Mech. Room: 26 sq.ft.

**Total: 684 sq.ft.**

**Grand Total: 1,518 sq.ft.**



0 ft 3 ft 5 ft 10 ft

\*\*While all reasonable attempts have been made to ensure accuracy and the square footage and room dimensions are believed to be correct to ANSI Standards, due to the possibility of human error the information cannot be guaranteed. E&O Insured for \$1,000,000

\*\* May Include Unfinished areas