



Todd & Karen Conner
Your Favourite Real Estate Team

604.290.2269 **REMAX**
 info@toddconner.com

1523 Seventh Avenue, New Westminster, BC

Total**

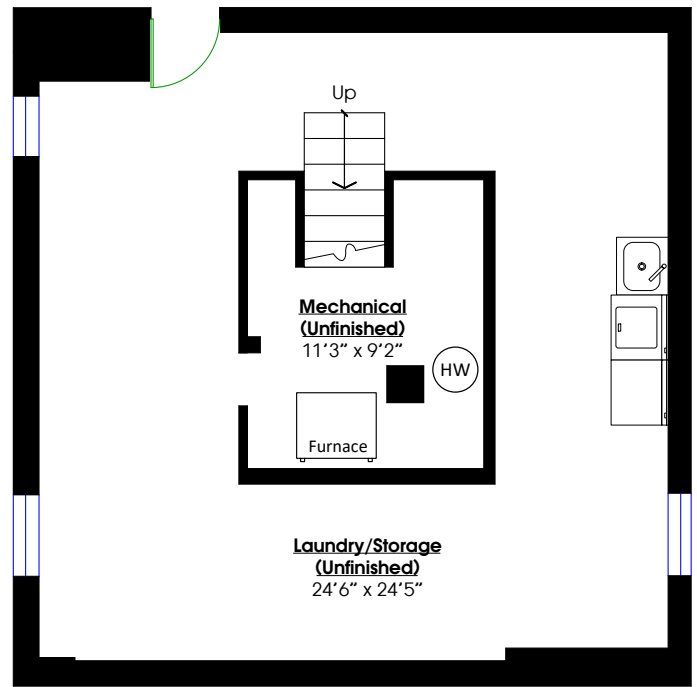
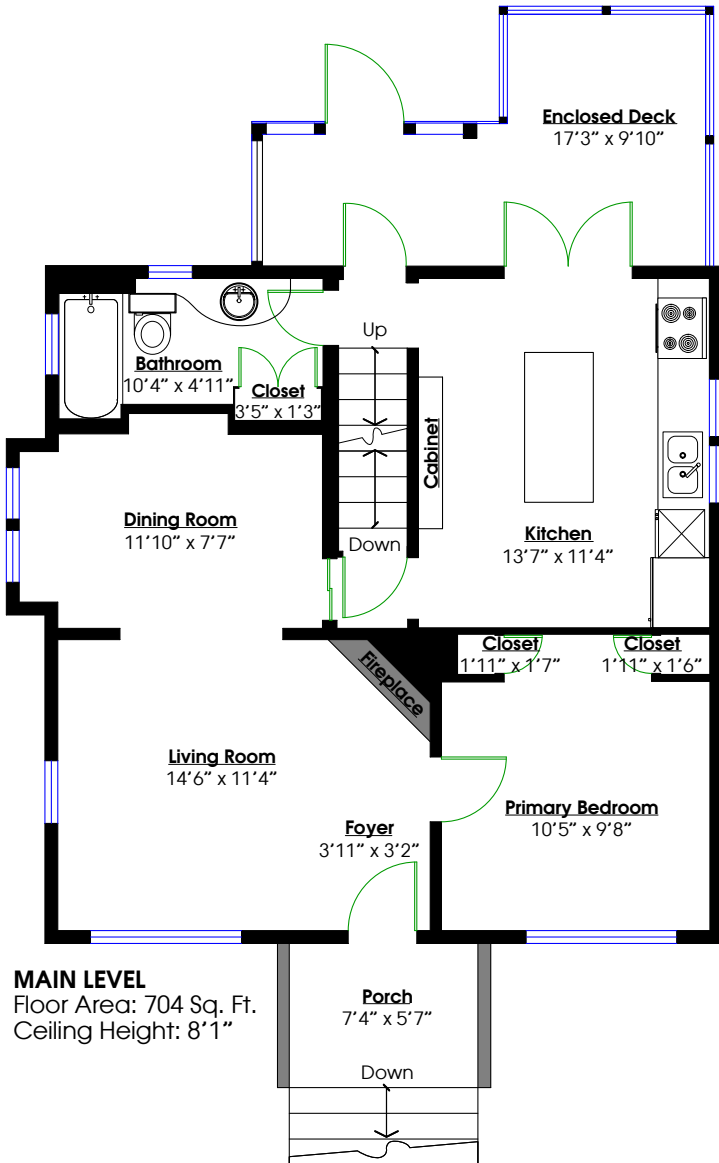
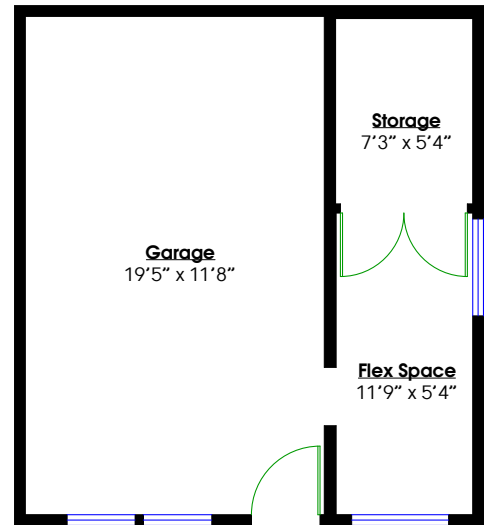
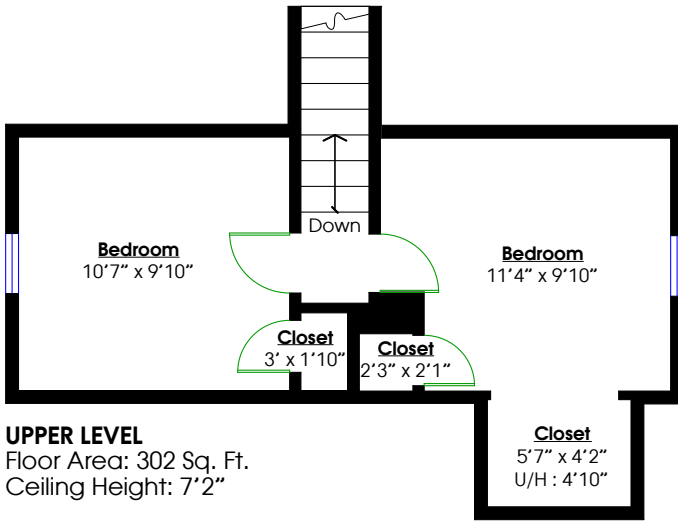
Main Level:	704 sq.ft.	D.Garage:	368 sq.ft.
Upper Level:	302 sq.ft.	Porch:	46 sq.ft.
		Deck:	138 sq.ft.

Total: 1,006 sq.ft.

Lower Level: 695 sq.ft.
 U/H Closet: 27 sq.ft.

Total: 552 sq.ft.

Grand Total: 1,728 sq.ft.



0 ft 3 ft 5 ft 10 ft



**While all reasonable attempts have been made to ensure accuracy and the square footage and room dimensions are believed to be correct to ANSI Standards, due to the possibility of human error the information cannot be guaranteed. E&O Insured for \$1,000,000

**Includes Under-height and Unfinished areas